



**EASTMAN
VILLAGE**
HARROW



TURRYAP[®]
UK



WELCOME TO
EASTMAN VILLAGE

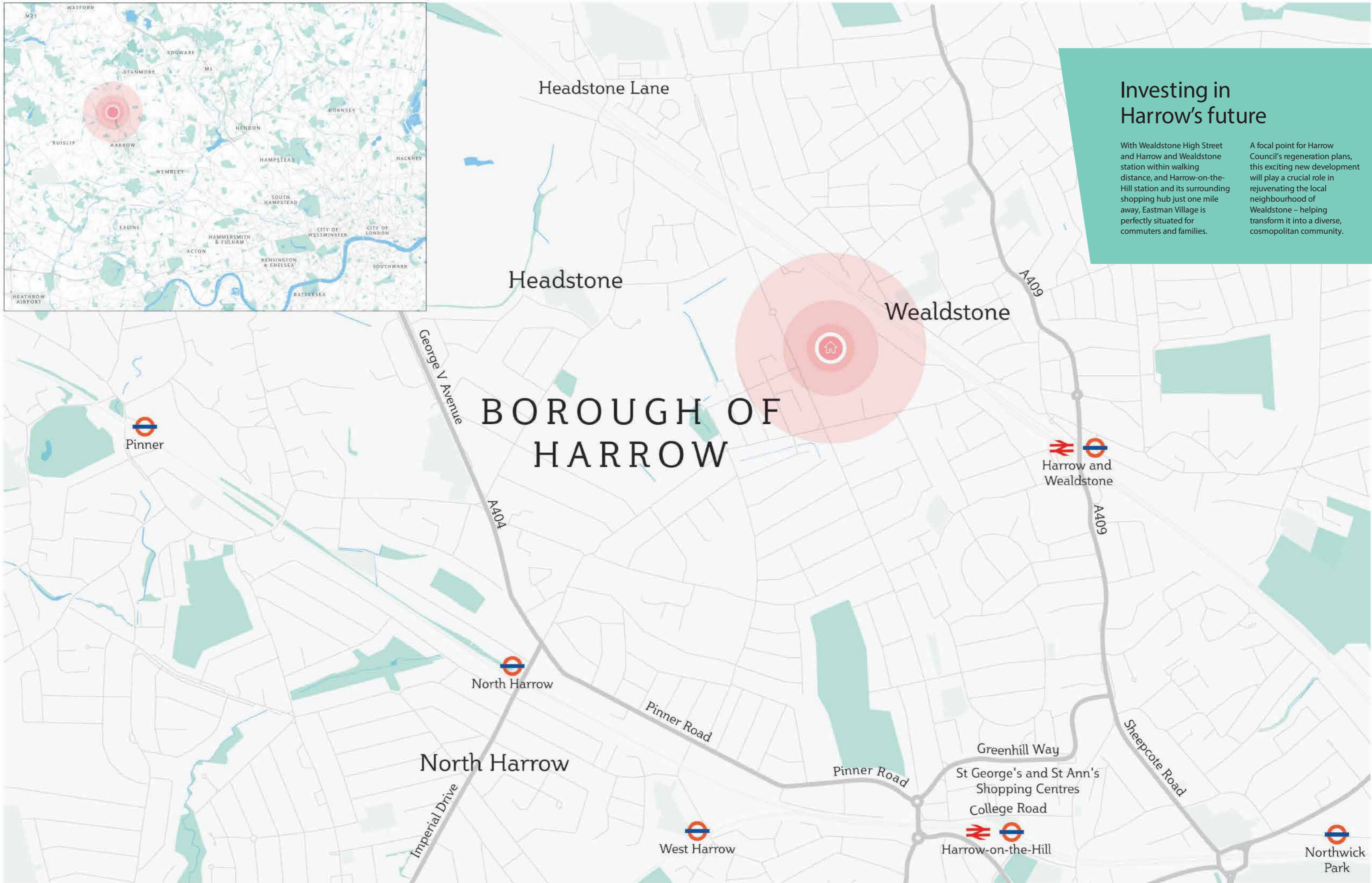
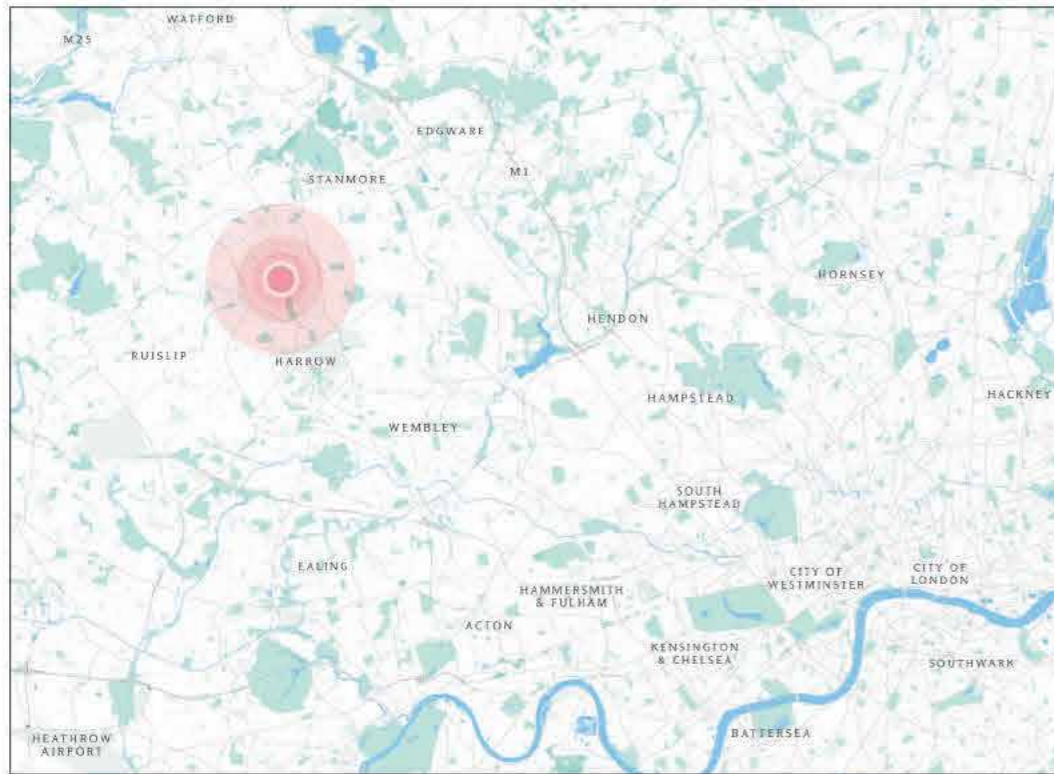


Homes in the heart of Harrow

Surrounded by excellent transport connections and steeped in local history, Eastman Village is an exciting new residential quarter conveniently located in the heart of Harrow. Home to the Kodak factory for 125 years, Eastman Village is set to revitalise this landmark site and create a community of more than

1,000 new homes. The first phase of the development will provide 460 one, two and three-bedroom apartments and three and four-bedroom houses.

An idyllic location for young professionals and families alike, this is your chance to own both a piece of local history and a part of Harrow's future.



Investing in Harrow's future

With Wealdstone High Street and Harrow and Wealdstone station within walking distance, and Harrow-on-the-Hill station and its surrounding shopping hub just one mile away, Eastman Village is perfectly situated for commuters and families.

A focal point for Harrow Council's regeneration plans, this exciting new development will play a crucial role in rejuvenating the local neighbourhood of Wealdstone – helping transform it into a diverse, cosmopolitan community.



Convenient connections to the city

Only 11 miles northwest of central London and surrounded by excellent transport links, commuting to the city and further afield from Eastman Village couldn't be easier. You'll find a bus to Harrow-on-the-Hill right on your doorstep, Harrow & Wealdstone station just a 10-minute walk away, and London airports under one hour's drive away.

By bus

5 minutes to St George's Shopping Centre

6 minutes to St Anne's Shopping Centre

7 minutes to Harrow-on-the-Hill Overground and Tube

On foot

10 minutes to Harrow & Wealdstone Overground and Tube

21 minutes to St George's Shopping Centre

23 minutes to St Anne's Shopping Centre

26 minutes to Harrow-on-the-Hill Overground and Tube

To London airports

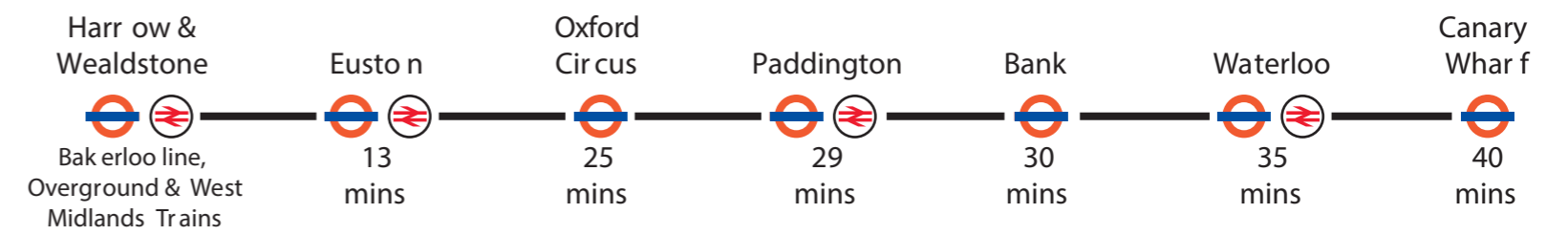
Heathrow
50-minute drive or
1 hour 10-minute tube ride

Gatwick
52-minute drive or
1 hour 15-minute train ride

Stansted
1 hour 12-minute drive or
1 hour 26-minute tube ride

London City Airport
1 hour 20-minute drive or
1 hour 24-minute tube ride

Travel times are approximate.
Sources: tfl.gov.uk and
maps.google.com



Living is easy in Eastman Village

Working with Harrow Council to contribute to wider regeneration plans, Barratt London is helping transform the local neighbourhood of Wealdstone with high-quality housing and new communal facilities. Providing over 1,000 of the 5,000 new homes promised as part of the council's 'Heart of Harrow' regeneration scheme – as well as plenty of open green space for local residents and a number of commercial units – Eastman Village is sure to be a thriving and exciting location for you to call home.

The first phase of the development will provide 460 one, two, three and four-bedroom homes. Most homes will have a balcony or terrace, and parking will also be available for selected two, three and four-bedroom homes.

Building on the legacy of the 125-year-old Kodak site, an expansive public park and communal gardens will surround the new homes at Eastman Village, with a series of pedestrian routes connecting Harrow View Road to the new park – perfect for al fresco gatherings with friends and family.

With excellent links to central London and further afield, a range of amenities close by and plenty of green open space, a home at the heart of this exciting new development coming to Harrow in 2019 could be yours.





Airy interiors finished to perfection

Whether you choose a one, two or three-bedroom apartment or a three or four-bedroom house, you'll enjoy a home filled with light and style. Open-plan living areas feature floor-to-ceiling glazing allowing natural light to flood in, while kitchens are equipped with a range of modern appliances, making cooking and entertaining a pleasure. Contemporary bathrooms

and en suites, complete with stylish fittings in white and chrome, are finished with attractive ceramic wall and floor tiling.

Most homes have their own private balcony or terrace, providing an outdoor extension of your living space that's ideal for soaking up the sun and the vibrant surroundings of Eastman Village.



There's plenty to explore

Within minutes of Wealdstone High Street and Harrow and Wealdstone station, you'll be right in the centre of all the action living at Eastman Village, with buzzing high streets, open green space and easy transport access nearby. In just a 10-minute bus ride or 20-minute walk to the

commercial hub of Harrow, you'll find two shopping centres, a busy high street and over 300 metres of pedestrianised streets and roads to enjoy. Not to mention a wealth of parks, leisure facilities and entertainment hotspots for you to explore.



Headstone Manor & Museum



Harrow School



Bentley Priory Museum



St Anns shopping centre

Convenience, connections and culture on your doorstep

With excellent transport links, two shopping centres, open green spaces, a busy high street and a range of great

schools located nearby, Eastman Village is an idyllic location for both families and young professionals.

Education

Harrow's reputation for outstanding education precedes it, with over 50 nurseries and primary schools and more than 20 secondary schools in the borough.

Harrow Primary School, Harrow High School and Harrow College are all within a 20-minute bus ride of Eastman Village.

The prestigious, independent Harrow School for boys is also under two miles mile away.

Other noteworthy local schools include St Anselm's Catholic Primary School, rated 'Outstanding' by Ofsted, and The John Lyon School, a leading independent boys' school.

Local life

Love to shop? You'll find plenty of opportunities for some retail therapy close by, with both St Ann's and St George's shopping centres just a 4-minute drive away or a quick bus ride down the road. Alternatively, head to the boutique shops and artisan cafés of Harrow-on-the-Hill for a more village-like feel. If fitness is more your thing, there's a huge range of activities to try at

Harrow Leisure Centre, including a high climbing wall, swimming pool and gym with more than 160 stations. And when it comes to eating out, you'll be spoiled for choice with Wealdstone High Street's wide range of restaurants and cafés – including family-friendly Shobha's Rasoi and popular Meeting Palace – on your doorstep.

Getting out and about

If you're looking for a fun day out for all the family, head to Headstone Manor and Museum – just a 10-minute walk away from Eastman Village. Set within historic grounds, Harrow Local History Museum celebrates 1,200 years of history in Harrow with plenty to do, see and learn. Alternatively, Roxbourne Park is just a 20-minute bus ride away – perfect for walkers,

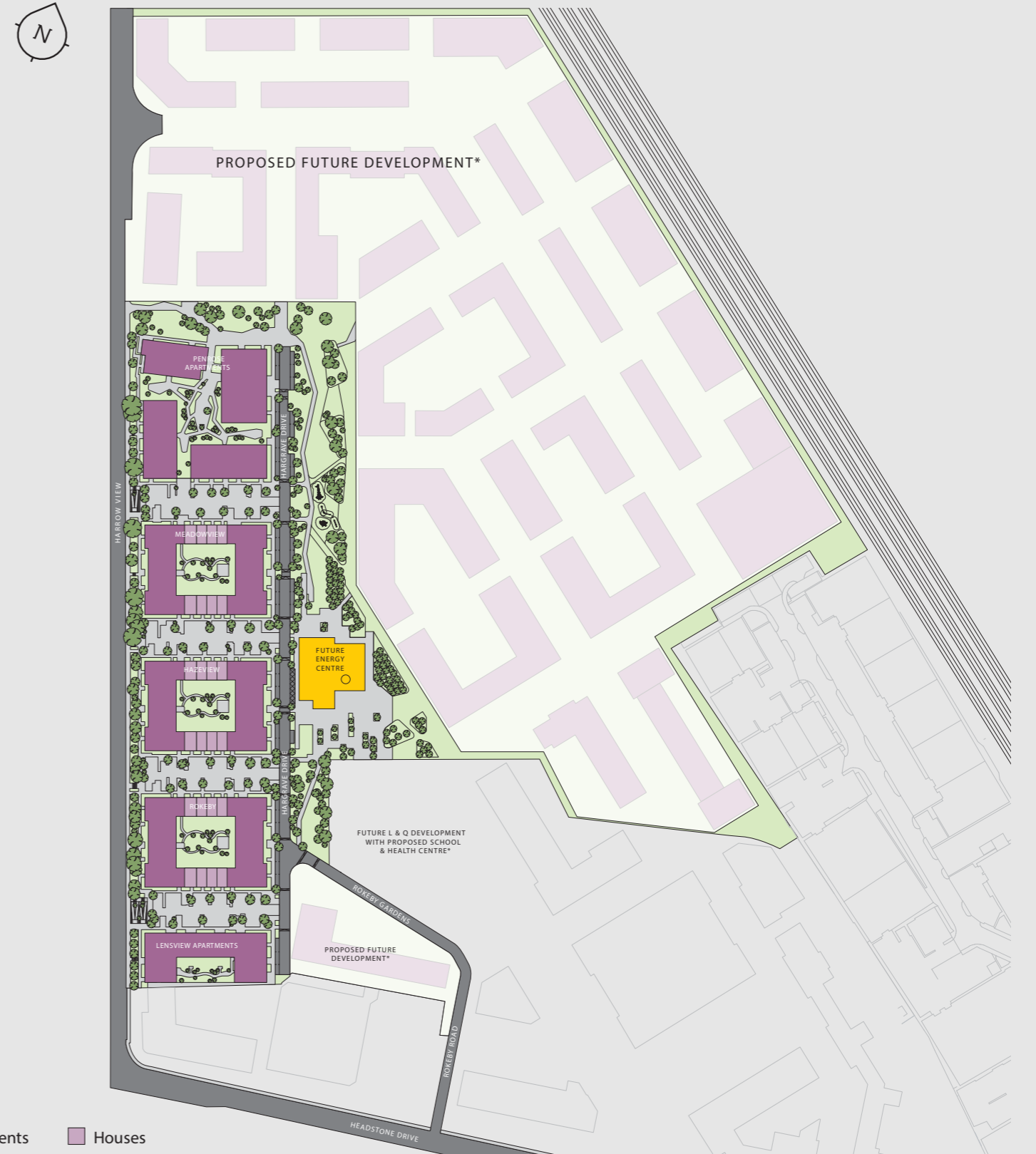
families and nature-enthusiasts alike, with football pitches, a children's play area, model steam railway and woodland walk situated within 26 hectares of open space. You can also find Northala Fields a 20-minute drive away: an award-winning country-style park with several fishing lakes, four artificial hills and a large field area.



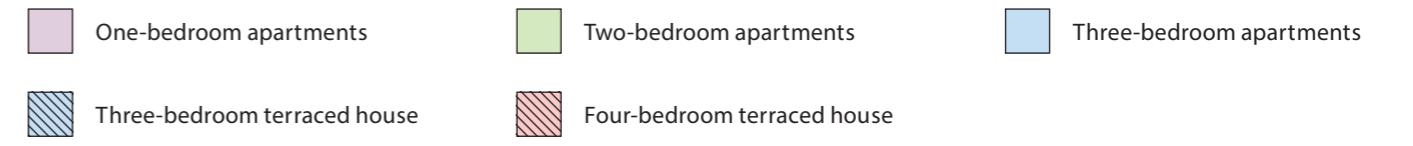
Site plan

Eastman Village is being built on the site of the former Kodak factory in Wealdstone, Harrow. The development will eventually comprise over 1,000 new homes set amongst plenty of

landscaped, green open spaces. You'll also be conveniently located a short walk from the amenities of Wealdstone High Street, which include shops, restaurants, cafés and banks.



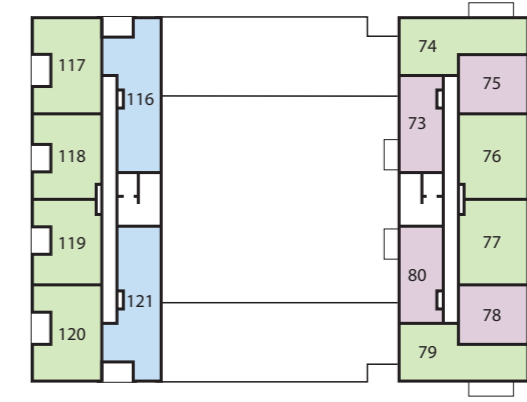
*subject to planning



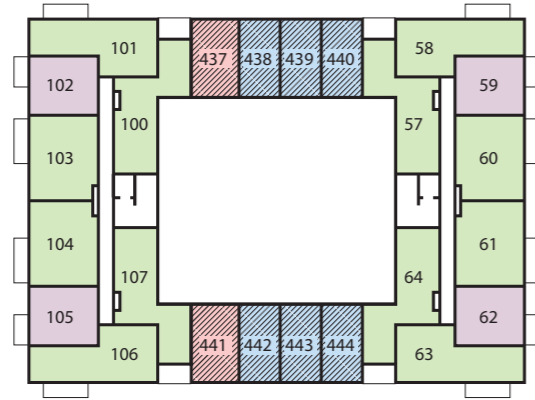
Level 0



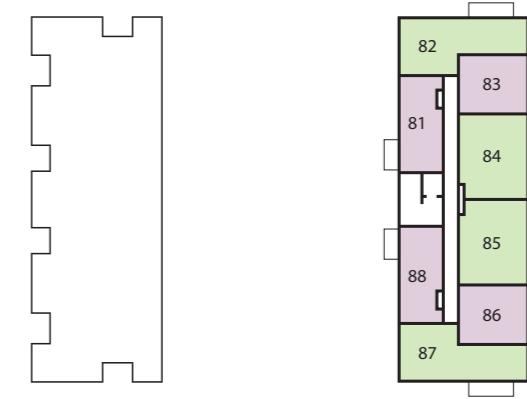
Level 3



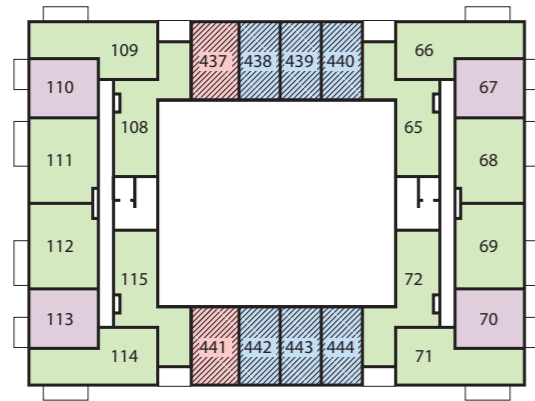
Level 1



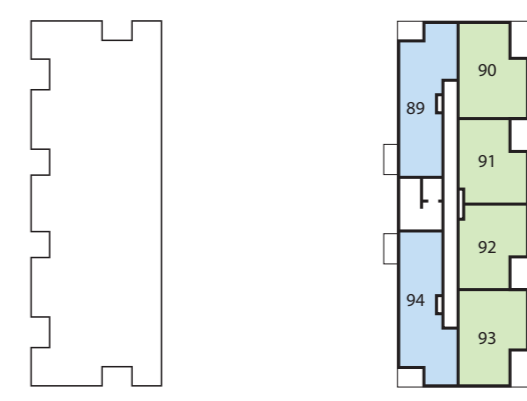
Level 4



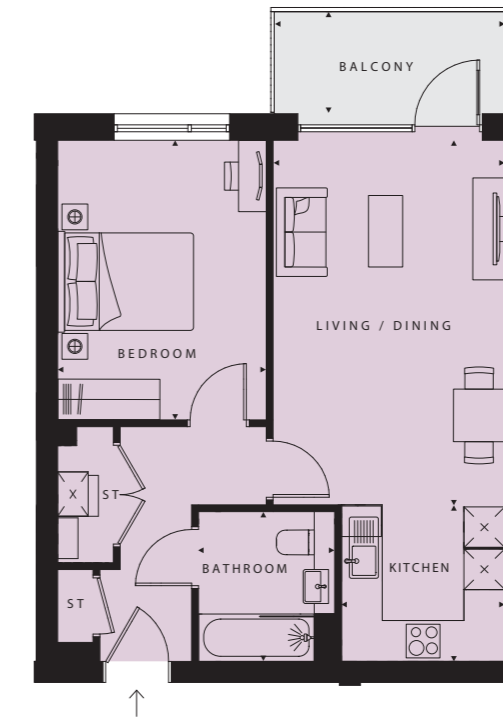
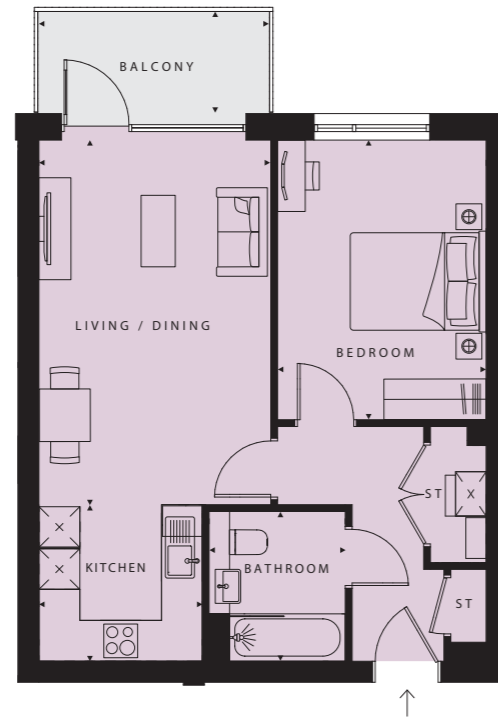
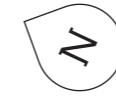
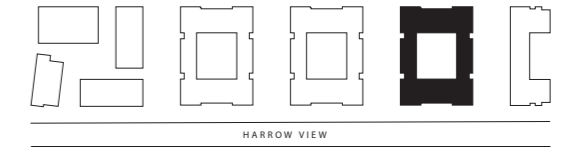
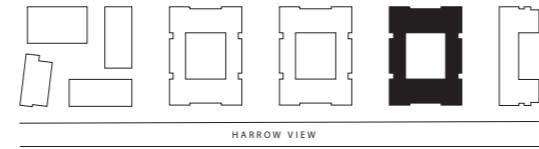
Level 2



Level 5



Rokeby Apartments 1 bedroom apartment



Level 1 Level 2 Level 3 Level 4

PLOT 59 (1), 67 (2), 75 (3),
83 (4)

Living/Dining
17'7" x 11'2" (5361 x 3400mm)

Kitchen
7'10" x 7'7" (2400 x 2300mm)

Bedroom
13'6" x 10'1" (4111 x 3070mm)

Bathroom
7'3" x 6'7" (2200 x 2000mm)

TOTAL AREA
541.7 sq ft (50.3 sq m)

Balcony
11'0" x 4'11" (3350 x 1500mm)



Level 1 Level 2 Level 3 Level 4

PLOT 62 (1), 70 (2), 78 (3),
86 (4)

Living/Dining
17'7" x 11'2" (5361 x 3400mm)

Kitchen
7'10" x 7'7" (2400 x 2300mm)

Bedroom
13'6" x 10'1" (4111 x 3070mm)

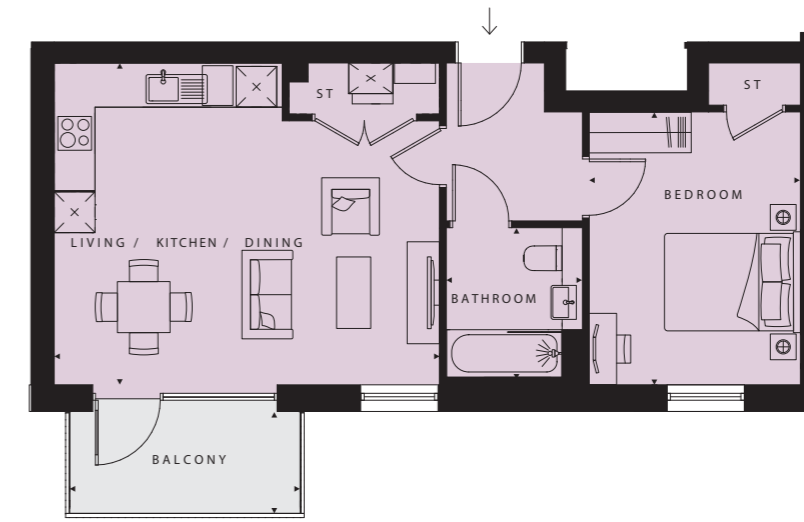
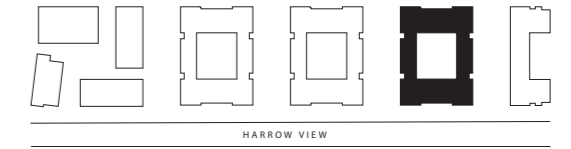
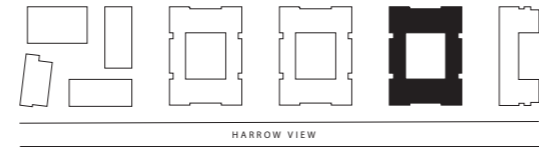
Bathroom
7'3" x 6'7" (2200 x 2000mm)

TOTAL AREA
541.7 sq ft (50.3 sq m)

Balcony
11'0" x 4'11" (3350 x 1500mm)

Rokeby Apartments

1 bedroom apartment



Level 3

Level 4

PLOT 73 (3), 81 (4)

Living/Kitchen/Dining
18'7" x 15'6" (5660 x 4731mm)

Bedroom
13'2" x 10'2" (4011 x 3103mm)

Bathroom
7'3" x 6'7" (2203 x 2000mm)

TOTAL AREA
539.5 sq ft (50.1 sq m)

Balcony
11'1" x 4'11" (3385 x 1500mm)



Level 3

Level 4

PLOT 80 (3), 88 (4)

Living/Kitchen/Dining
18'7" x 15'6" (5660 x 4731mm)

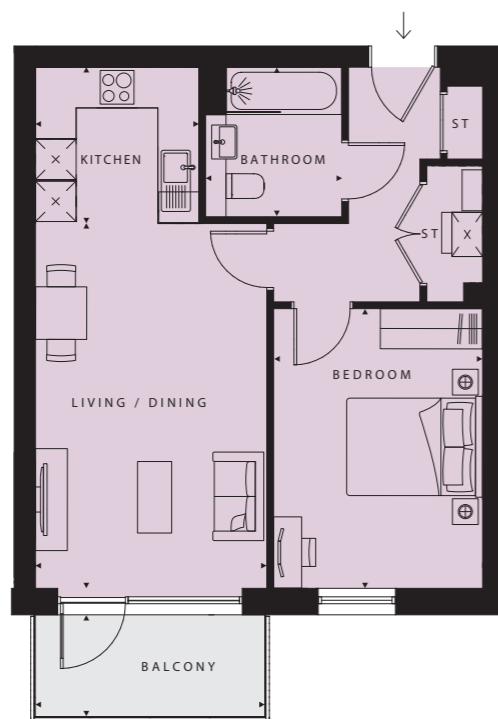
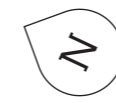
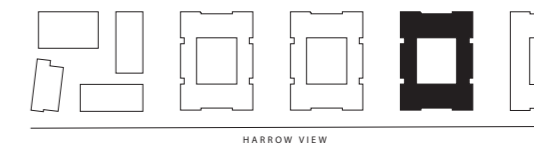
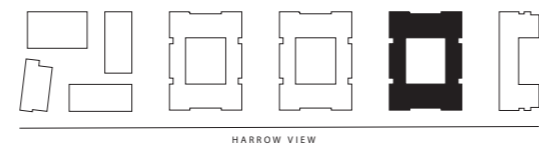
Bedroom
13'2" x 10'2" (4011 x 3103mm)

Bathroom
7'3" x 6'7" (2203 x 2000mm)

TOTAL AREA
539.5 sq ft (50.1 sq m)

Balcony
11'1" x 4'11" (3385 x 1500mm)

Rokeby Apartments 1 bedroom apartment



Level 1

Level 2

PLOT 102 (1), 110 (2)

Living/Dining
17'7" x 11'2" (5361 x 3400mm)

Kitchen
7'10" x 7'7" (2400 x 2300mm)

Bedroom
13'6" x 10'1" (4111 x 3070mm)

Bathroom
7'3" x 6'7" (2200 x 2000mm)

TOTAL AREA
541.7 sq ft (50.3 sq m)

Balcony
11'0" x 4'11" (3350 x 1500mm)



Level 1

Level 2

PLOT 105 (1), 113 (2)

Living/Dining
17'7" x 11'2" (5361 x 3400mm)

Kitchen
7'10" x 7'7" (2400 x 2300mm)

Bedroom
13'6" x 10'1" (4111 x 3070mm)

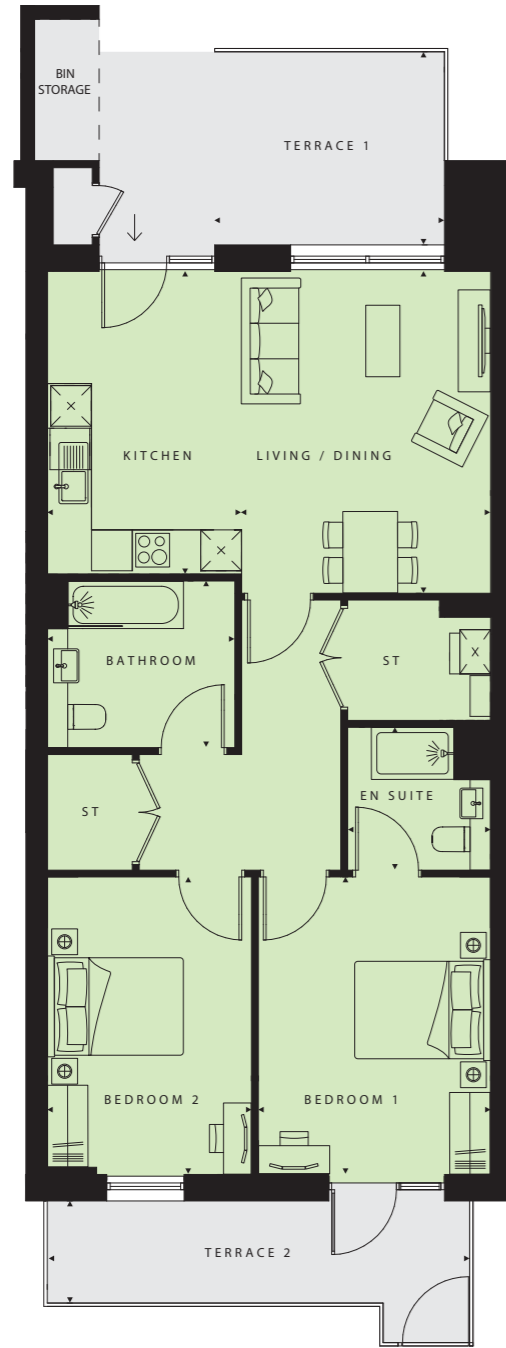
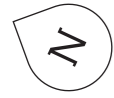
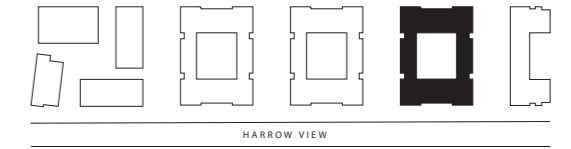
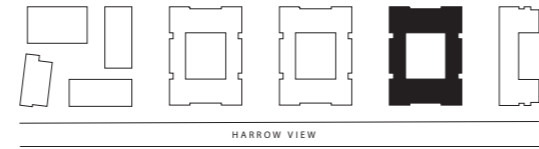
Bathroom
7'3" x 6'7" (2200 x 2000mm)

TOTAL AREA
541.7 sq ft (50.3 sq m)

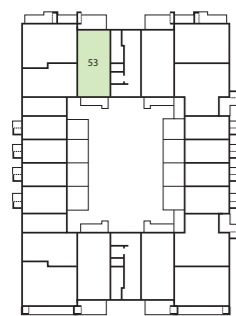
Balcony
11'0" x 4'11" (3350 x 1500mm)

Rokeby Apartments

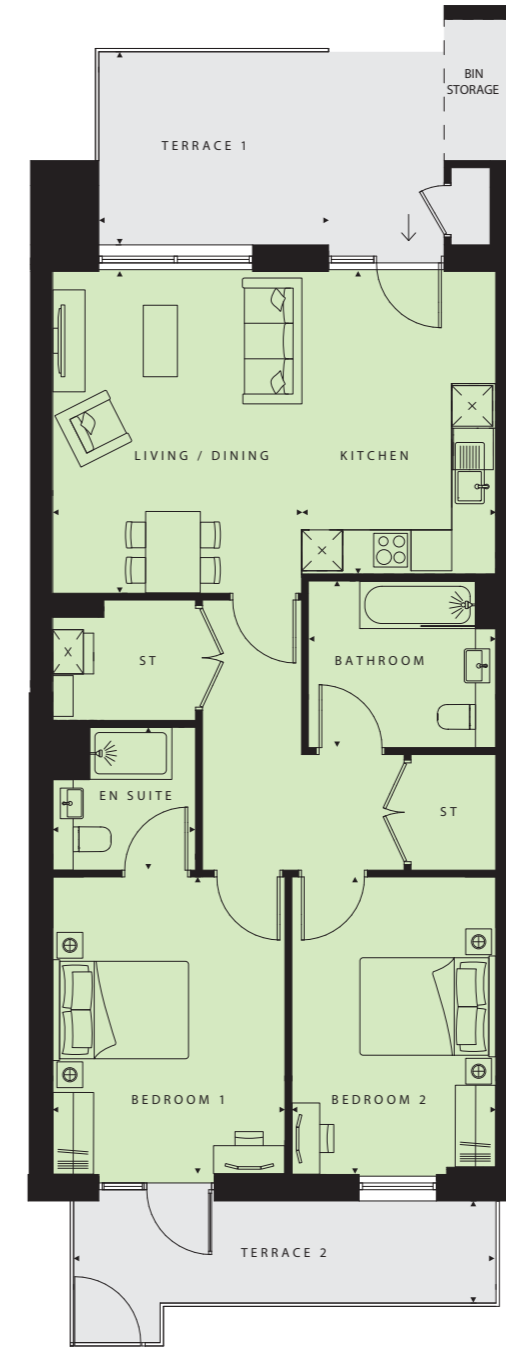
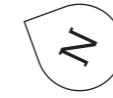
2 bedroom apartment



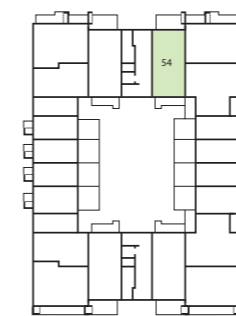
PLOT 53 (0)
Living/Dining 15'6" x 12'0" (4730 x 3657mm)
Kitchen 14'7" x 9'4" (4451 x 2855mm)
Bedroom 1 14'4" x 11'2" (4373 x 3412mm)
En suite 6'11" x 6'11" (2100 x 2100mm)
Bedroom 2 14'4" x 9'10" (4373 x 3000mm)
Bathroom 9'0" x 8'0" (2755 x 2450mm)
TOTAL AREA 930.5 sq ft (86.4 sq m)
Terrace 1 11'1" x 9'4" (3375 x 2837mm)
Terrace 2 20'4" x 4'11" (6205 x 1500mm)



Level 0



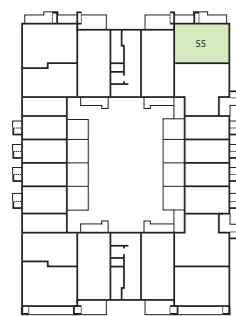
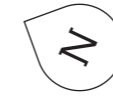
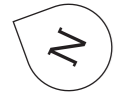
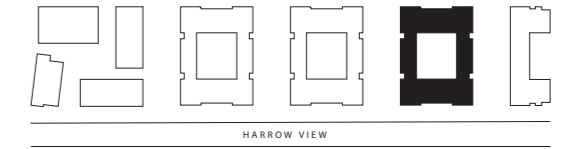
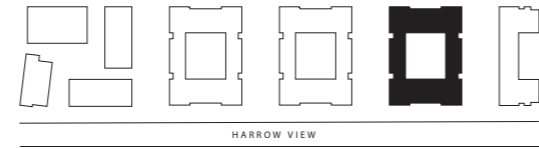
PLOT 54 (0)
Living/Dining 15'6" x 12'0" (4730 x 3657mm)
Kitchen 14'7" x 9'4" (4451 x 2855mm)
Bedroom 1 14'4" x 11'2" (4373 x 3412mm)
En suite 6'11" x 6'11" (2100 x 2100mm)
Bedroom 2 14'4" x 9'10" (4373 x 3000mm)
Bathroom 9'0" x 8'0" (2755 x 2450mm)
TOTAL AREA 930.5 sq ft (86.4 sq m)
Terrace 1 11'1" x 9'4" (3375 x 2837mm)
Terrace 2 20'4" x 4'11" (6205 x 1500mm)



Level 0

Rokeby Apartments

2 bedroom apartment



Level 0

PLOT 55 (0)
Living/Dining 16'7" x 13'4" (5061 x 4071mm)
Kitchen 10'8" x 8'6" (3241 x 2600mm)
Bedroom 1 13'0" x 9'6" (3961 x 2900mm)
En suite 6'11" x 5'9" (2100 x 1750mm)
Bedroom 2 12'10" x 11'10" (3900 x 3600mm)
Bathroom 8'6" x 8'2" (2600 x 2500mm)
TOTAL AREA 889.8 sq ft (82.7 sq m)
Terrace 1 12'8" x 5'3" (3873 x 1600mm)
Terrace 2 12'0" x 5'3" (3653 x 1600mm)

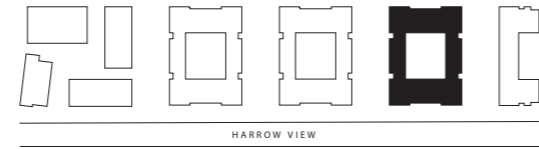


Level 1

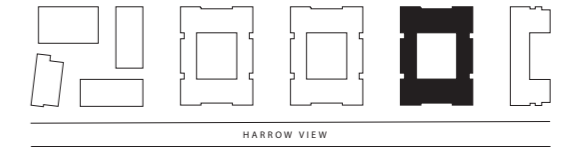
Level 2

PLOT 57 (1), 65 (2)
Living/Kitchen/Dining 21'5" x 12'0" (6524 x 3667mm)
Bedroom 1 11'0" x 10'1" (3350 x 3080mm)
En suite 6'7" x 5'1" (2000 x 1550mm)
Bedroom 2 13'4" x 9'5" (4062 x 2861mm)
Bathroom 7'3" x 6'7" (2200 x 2000mm)
TOTAL AREA 803.7 sq ft (74.7 sq m)
Terrace 11'6" x 6'10" (3498 x 2079mm)

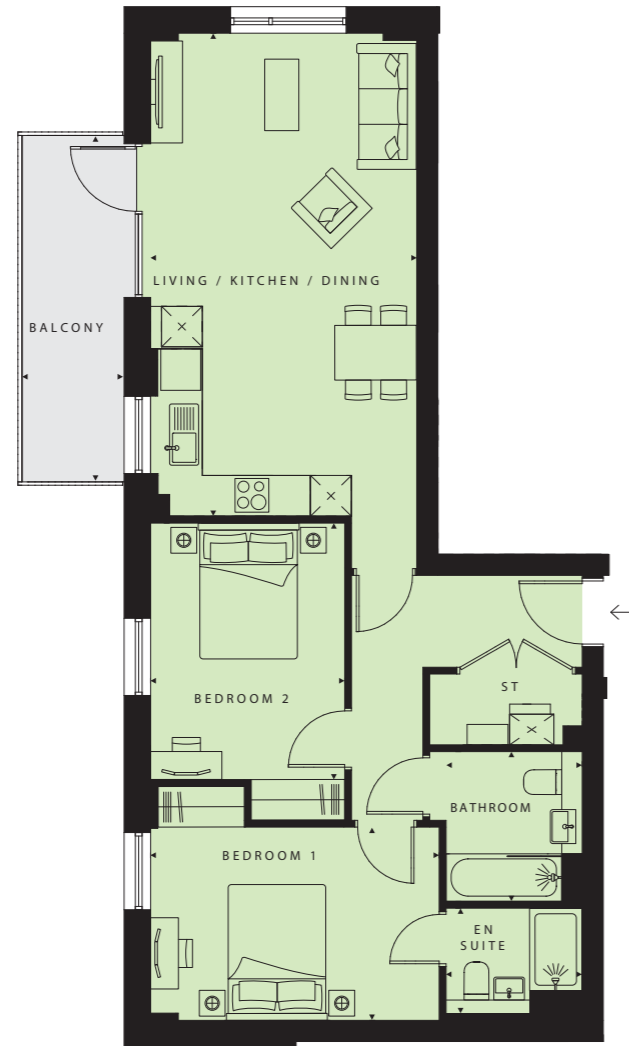
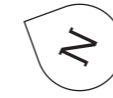
Rokeby Apartments 2 bedroom apartment



HARROW VIEW



HARROW VIEW



Level 1

Level 2

PLOT 58 (1), 66 (2)	
Living/Kitchen/Dining	23'4" x 12'10" (7100 x 3911mm)
Bedroom 1	13'11" x 9'4" (4241 x 2841mm)
En suite	6'7" x 5'1" (2000 x 1550mm)
Bedroom 2	12'4" x 9'4" (3770 x 2851mm)
Bathroom	7'3" x 6'7" (2200 x 2000mm)
TOTAL AREA	781.9 sq ft (72.6 sq m)
Balcony	16'8" x 4'11" (5073 x 1500mm)



Level 1

Level 2

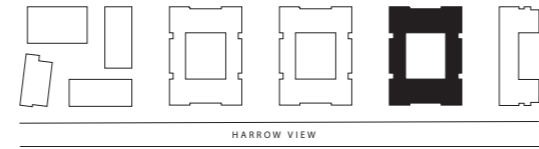
Level 3

Level 4

PLOT 60 (1), 68 (2), 76 (3), 84 (4)	
Living/Dining	17'7" x 12'5" (5360 x 3788mm)
Kitchen	9'4" x 7'7" (2850 x 2300mm)
Bedroom 1	15'11" x 9'0" (4841 x 2755mm)
En suite	6'11" x 5'5" (2100 x 1655mm)
Bedroom 2	13'10" x 9'5" (4211 x 2870mm)
Bathroom	7'3" x 6'7" (2200 x 2000mm)
TOTAL AREA	780.9 sq ft (72.5 sq m)
Balcony	16'7" x 4'11" (5063 x 1500mm)

Rokeby Apartments

2 bedroom apartment



PLOT 61 (1), 69 (2), 77 (3),
85 (4)

Living/Dining
17'7" x 12'5" (5360 x 3788mm)

Kitchen
9'4" x 7'7" (2850 x 2300mm)

Bedroom 1
15'11" x 9'0" (4841 x 2755mm)

En suite
6'11" x 5'5" (2100 x 1655mm)

Bedroom 2
13'10" x 9'5" (4211 x 2870mm)

Bathroom
7'3" x 6'7" (2200 x 2000mm)

TOTAL AREA
780.9 sq ft (72.5 sq m)

Balcony
16'7" x 4'11" (5063 x 1500mm)



PLOT 63 (1), 71 (2)

Living/Kitchen/Dining
23'4" x 12'10" (7100 x 3911mm)

Bedroom 1
13'11" x 9'4" (4241 x 2841mm)

En suite
6'7" x 5'1" (2000 x 1550mm)

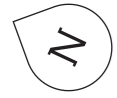
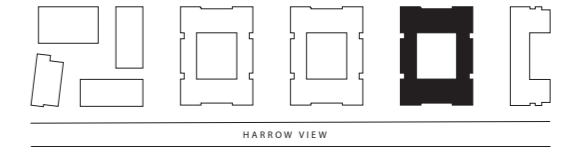
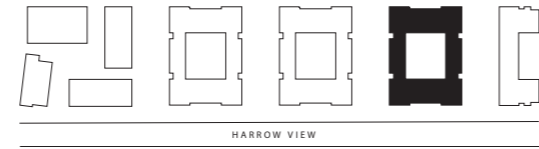
Bedroom 2
12'4" x 9'4" (3770 x 2851mm)

Bathroom
7'3" x 6'7" (2200 x 2000mm)

TOTAL AREA
781.9 sq ft (72.6 sq m)

Balcony
16'8" x 4'11" (5073 x 1500mm)

Rokeby Apartments 2 bedroom apartment



Level 1

Level 2

PLOT 64 (1), 72 (2)	
Living/Kitchen/Dining	21'5" x 12'0" (6524 x 3667mm)
Bedroom 1	11'0" x 10'1" (3350 x 3080mm)
En suite	6'7" x 5'1" (2000 x 1550mm)
Bedroom 2	13'4" x 9'5" (4062 x 2861mm)
Bathroom	7'3" x 6'7" (2200 x 2000mm)
TOTAL AREA	803.7 sq ft (74.7 sq m)
Terrace	11'6" x 6'10" (3498 x 2079mm)

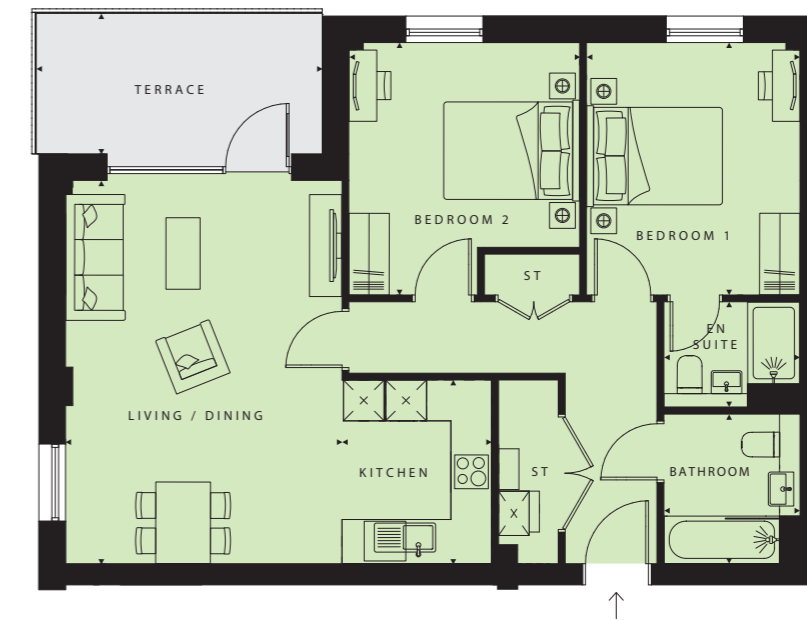
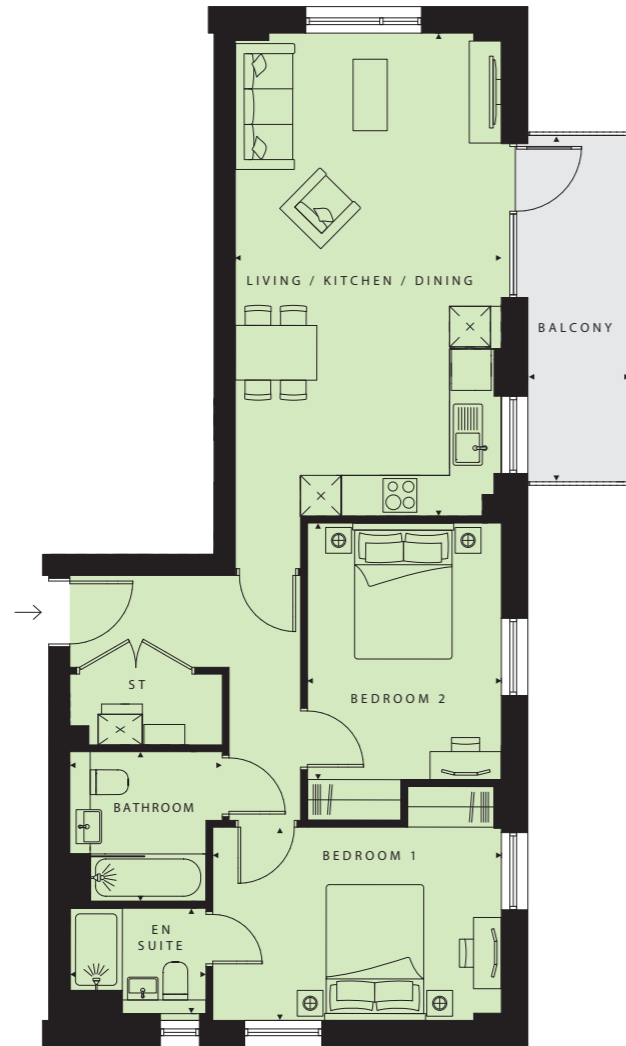
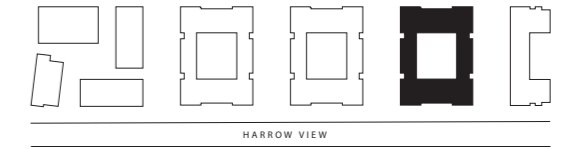
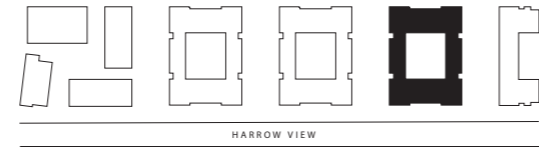


Level 3

Level 4

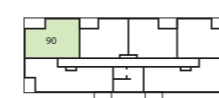
PLOT 74 (3), 82 (4)	
Living/Kitchen/Dining	23'4" x 12'10" (7100 x 3911mm)
Bedroom 1	13'11" x 9'4" (4241 x 2841mm)
En suite	6'7" x 5'1" (2000 x 1550mm)
Bedroom 2	12'4" x 9'4" (3770 x 2851mm)
Bathroom	7'3" x 6'7" (2200 x 2000mm)
TOTAL AREA	781.9 sq ft (72.6 sq m)
Balcony	16'8" x 4'11" (5073 x 1500mm)

Rokeby Apartments 2 bedroom apartment



Level 3

Level 4



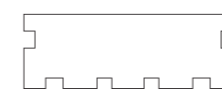
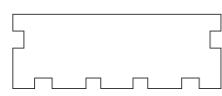
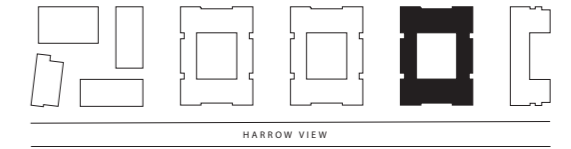
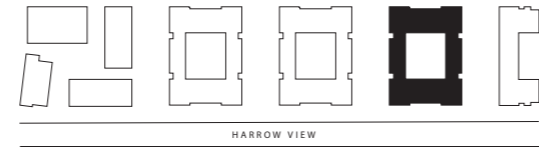
Level 5

PLOT 79 (3), 87 (4)	
Living/Kitchen/Dining	23'4" x 12'10" (7100 x 3911mm)
Bedroom 1	13'11" x 9'4" (4241 x 2841mm)
En suite	6'7" x 5'1" (2000 x 1550mm)
Bedroom 2	12'4" x 9'4" (3770 x 2851mm)
Bathroom	7'3" x 6'7" (2200 x 2000mm)
TOTAL AREA	781.9 sq ft (72.6 sq m)
Balcony	16'8" x 4'11" (5073 x 1500mm)

PLOT 90 (5)	
Living/Dining	18'6" x 13'4" (5636 x 4063mm)
Kitchen	8'10" x 7'3" (2700 x 2200mm)
Bedroom 1	12'2" x 10'3" (3711 x 3135mm)
En suite	6'7" x 5'1" (2000 x 1550mm)
Bedroom 2	12'2" x 11'2" (3711 x 3393mm)
Bathroom	7'3" x 6'7" (2200 x 2000mm)
TOTAL AREA	799.0 sq ft (74.2 sq m)
Terrace	13'8" x 6'9" (4163 x 2065mm)

Rokeby Apartments

2 bedroom apartment



Level 5

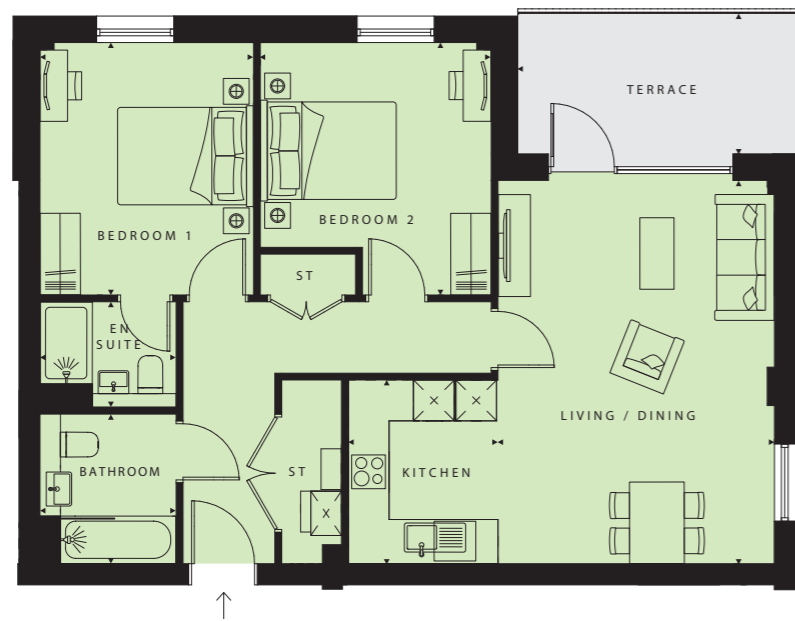
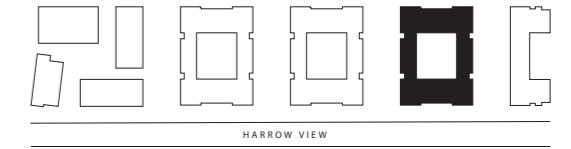
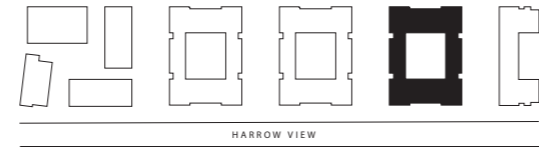
Level 5

PLOT 91 (5)
Living/Kitchen/Dining 18'6" x 12'4" (5635 x 3762mm)
Bedroom 1 15'11" x 9'10" (4841 x 3000mm)
En suite 6'11" x 5'5" (2100 x 1654mm)
Bedroom 2 13'10" x 8'8" (4211 x 2651mm)
Bathroom 7'3" x 6'7" (2200 x 2000mm)
TOTAL AREA 696.7 sq ft (64.7 sq m)
Terrace 11'1" x 6'9" (3385 x 2065mm)

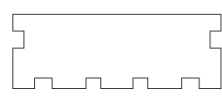
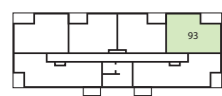
PLOT 92 (5)
Living/Kitchen/Dining 18'6" x 12'4" (5635 x 3762mm)
Bedroom 1 15'11" x 9'10" (4841 x 3000mm)
En suite 6'11" x 5'5" (2100 x 1654mm)
Bedroom 2 13'10" x 8'8" (4211 x 2651mm)
Bathroom 7'3" x 6'7" (2200 x 2000mm)
TOTAL AREA 696.7 sq ft (64.7 sq m)
Terrace 11'1" x 6'9" (3385 x 2065mm)

Rokeby Apartments

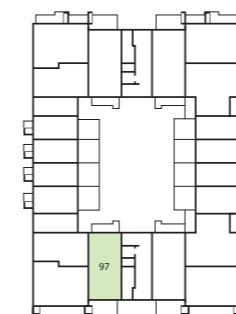
2 bedroom apartment



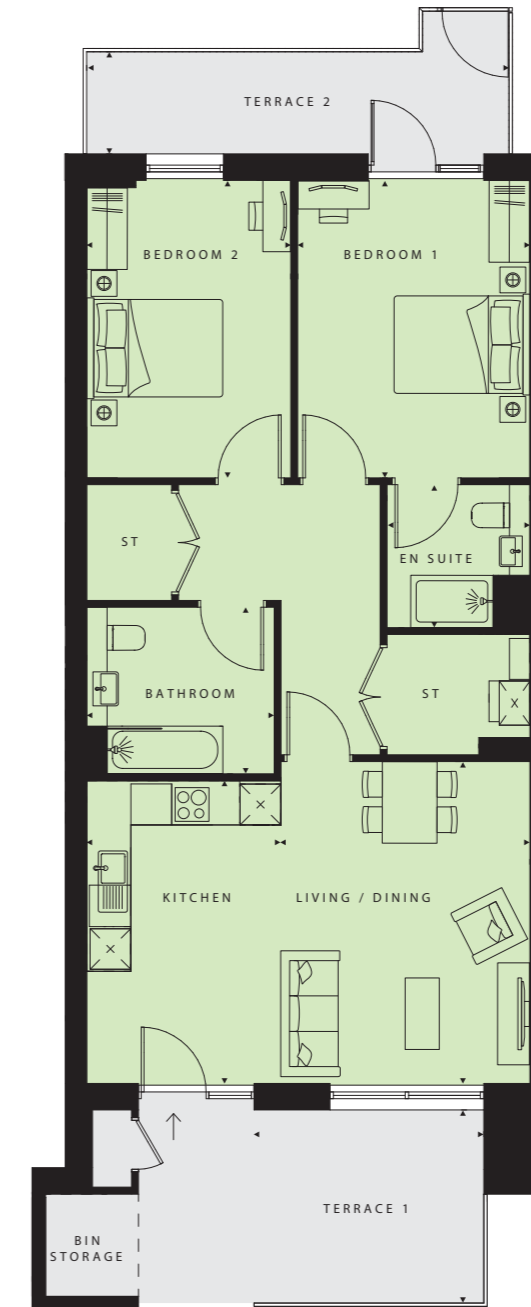
PLOT 93 (5)
Living/Dining 18'6" x 13'4" (5636 x 4063mm)
Kitchen 8'10" x 7'3" (2700 x 2200mm)
Bedroom 1 12'2" x 10'3" (3711 x 3135mm)
En suite 6'7" x 5'1" (2000 x 1550mm)
Bedroom 2 12'2" x 11'2" (3711 x 3393mm)
Bathroom 7'3" x 6'7" (2200 x 2000mm)
TOTAL AREA 799.0 sq ft (74.2 sq m)
Terrace 13'8" x 6'9" (4163 x 2065mm)



Level 5



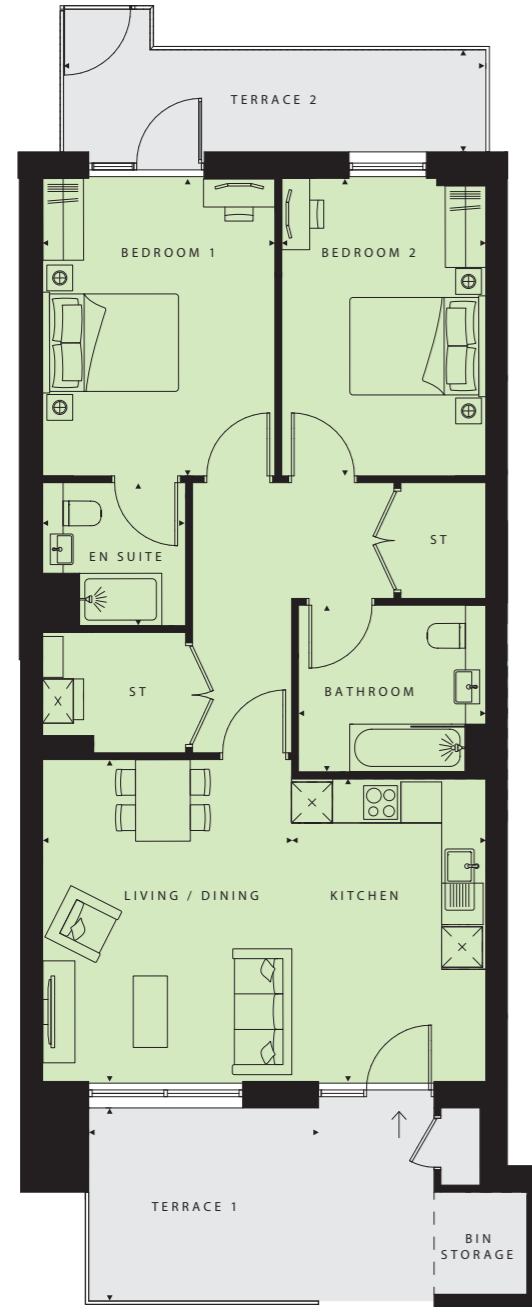
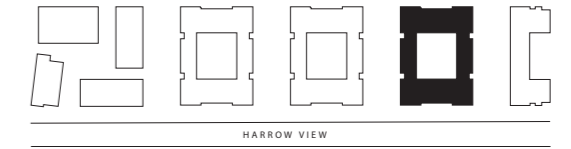
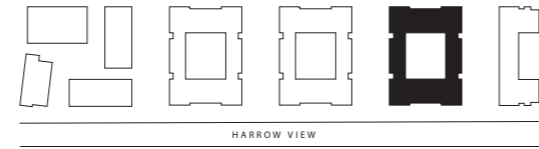
Level 0



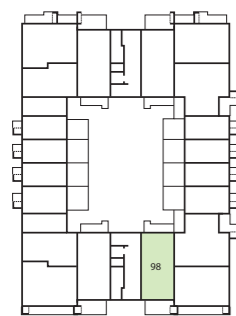
PLOT 97 (0)
Living/Dining 15'6" x 12'0" (4730 x 3657mm)
Kitchen 14'7" x 9'4" (4451 x 2855mm)
Bedroom 1 14'4" x 11'2" (4373 x 3412mm)
En suite 6'11" x 6'11" (2100 x 2100mm)
Bedroom 2 14'4" x 9'10" (4373 x 3000mm)
Bathroom 9'0" x 8'0" (2755 x 2450mm)
TOTAL AREA 930.5 sq ft (86.4 sq m)
Terrace 1 11'1" x 9'4" (3375 x 2838mm)
Terrace 2 20'4" x 4'11" (6205 x 1500mm)

Rokeby Apartments

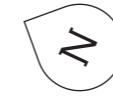
2 bedroom apartment



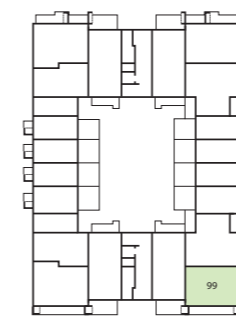
PLOT 98 (0)
Living/Dining 15'6" x 12'0" (4730 x 3657mm)
Kitchen 14'7" x 9'4" (4451 x 2855mm)
Bedroom 1 14'4" x 11'2" (4373 x 3412mm)
En suite 6'11" x 6'11" (2100 x 2100mm)
Bedroom 2 14'4" x 9'10" (4373 x 3000mm)
Bathroom 9'0" x 8'0" (2755 x 2450mm)
TOTAL AREA 930.5 sq ft (86.4 sq m)
Terrace 1 11'1" x 9'4" (3375 x 2838mm)
Terrace 2 20'4" x 4'11" (6205 x 1500mm)



Level 0



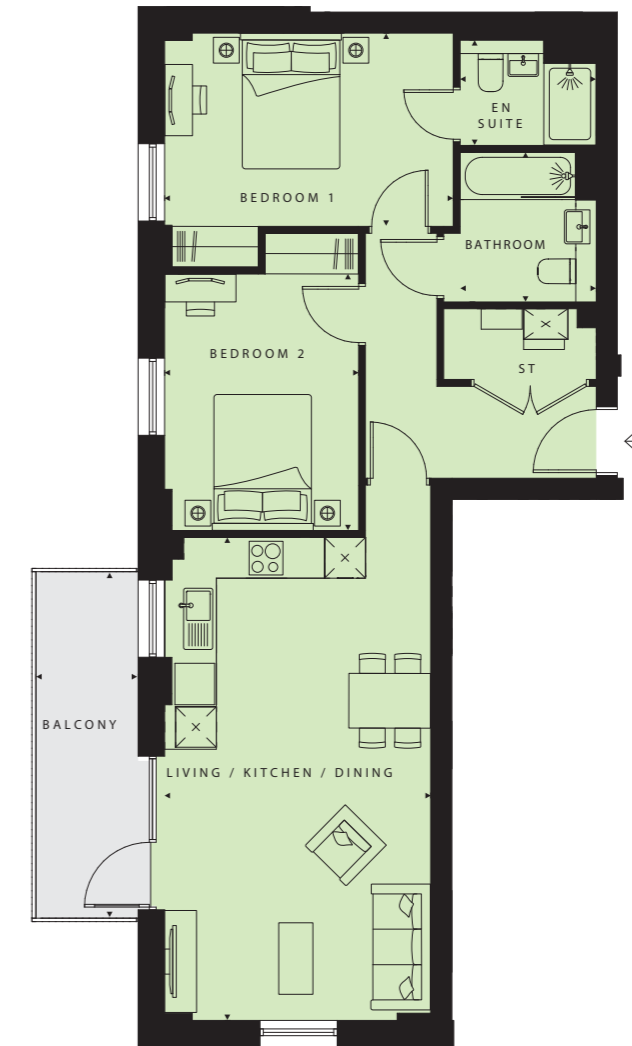
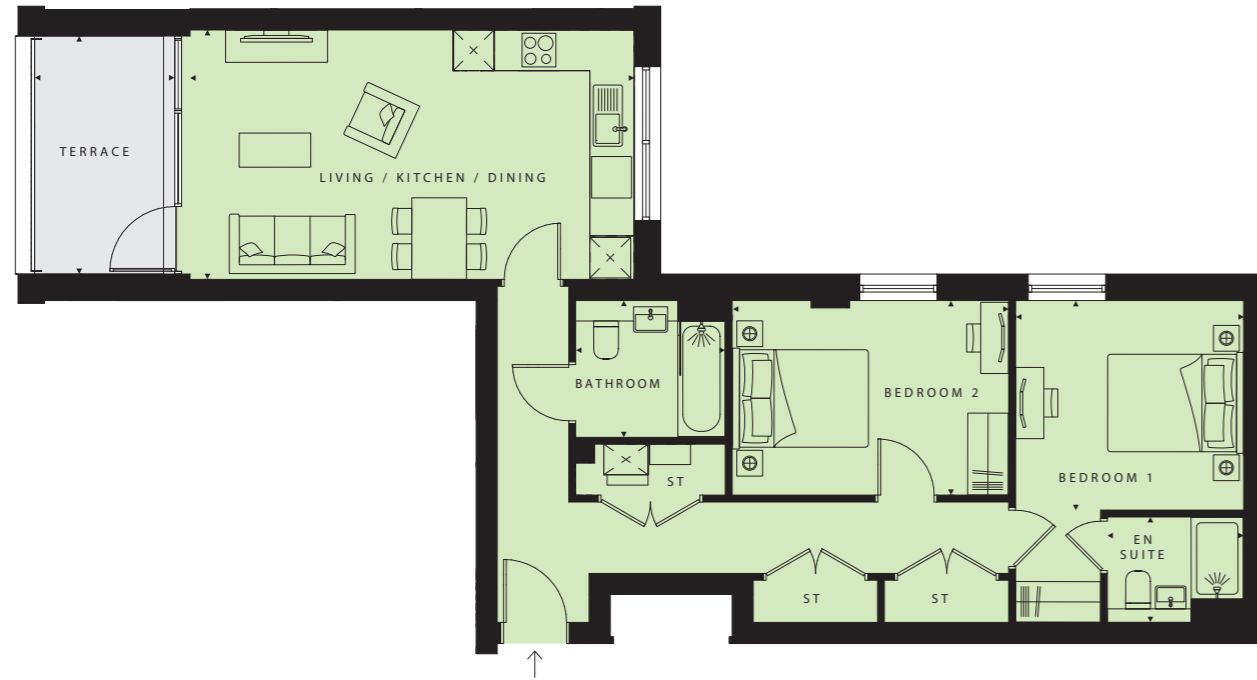
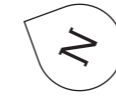
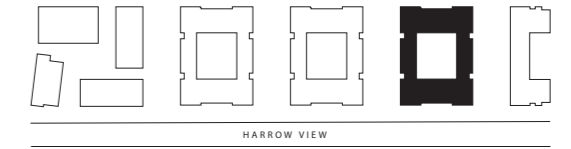
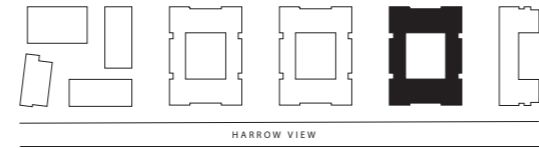
PLOT 99 (0)
Living/Dining 16'7" x 13'4" (5061 x 4071mm)
Kitchen 10'8" x 8'6" (3241 x 2600mm)
Bedroom 1 13'0" x 9'6" (3961 x 2900mm)
En suite 6'11" x 5'9" (2100 x 1750mm)
Bedroom 2 12'10" x 11'10" (3900 x 3600mm)
Bathroom 8'6" x 8'2" (2600 x 2500mm)
TOTAL AREA 889.8 sq ft (82.7 sq m)
Terrace 1 16'0" x 5'3" (4885 x 1600mm)
Terrace 2 10'0" x 5'3" (3037 x 1600mm)



Level 0

Rokeby Apartments

2 bedroom apartment



Level 1

Level 2

PLOT 100 (1), 108 (2)
Living/Kitchen/Dining 21'5" x 12'0" (6524 x 3667mm)
Bedroom 1 11'0" x 10'1" (3350 x 3080mm)
En suite 6'7" x 5'1" (2000 x 1550mm)
Bedroom 2 13'4" x 9'5" (4062 x 2861mm)
Bathroom 7'3" x 6'7" (2200 x 2000mm)
TOTAL AREA 803.7 sq ft (74.7 sq m)
Terrace 11'6" x 6'10" (3498 x 2079mm)

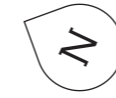
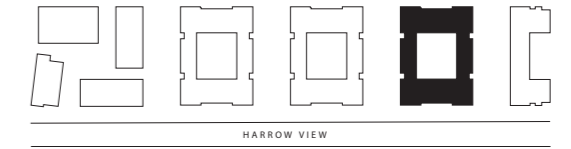
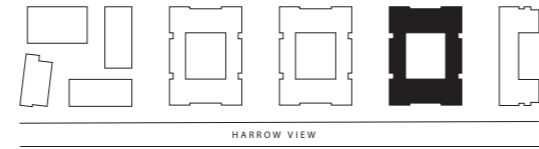


Level 1

Level 2

PLOT 101 (1), 109 (2)
Living/Kitchen/Dining 23'4" x 12'10" (7100 x 3911mm)
Bedroom 1 13'11" x 9'4" (4241 x 2841mm)
En suite 6'7" x 5'1" (2000 x 1550mm)
Bedroom 2 12'4" x 9'4" (3770 x 2851mm)
Bathroom 7'3" x 6'7" (2200 x 2000mm)
TOTAL AREA 781.9 sq ft (72.6 sq m)
Balcony 16'8" x 4'11" (5073 x 1500mm)

Rokeby Apartments 2 bedroom apartment



Level 1 Level 2

PLOT 103 (1), 111 (2)

Living/Dining
17'7" x 12'5" (5360 x 3793mm)

Kitchen
9'4" x 7'7" (2850 x 2300mm)

Bedroom 1
15'11" x 9'0" (4841 x 2750mm)

En suite
6'11" x 5'5" (2100 x 1655mm)

Bedroom 2
13'10" x 9'5" (4211 x 2870mm)

Bathroom
7'3" x 6'7" (2200 x 2000mm)

TOTAL AREA
780.9 sq ft (72.5 sq m)

Balcony
16'7" x 4'11" (5063 x 1500mm)



Level 1 Level 2

PLOT 104 (1), 112 (2)

Living/Dining
17'7" x 12'5" (5360 x 3793mm)

Kitchen
9'4" x 7'7" (2850 x 2300mm)

Bedroom 1
15'11" x 9'0" (4841 x 2750mm)

En suite
6'11" x 5'5" (2100 x 1655mm)

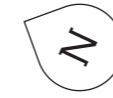
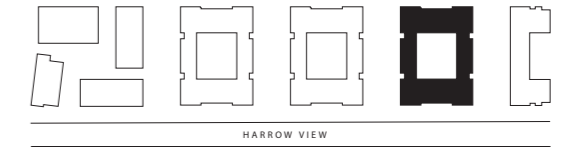
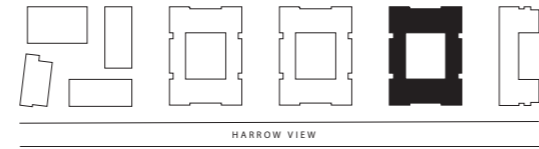
Bedroom 2
13'10" x 9'5" (4211 x 2870mm)

Bathroom
7'3" x 6'7" (2200 x 2000mm)

TOTAL AREA
780.9 sq ft (72.5 sq m)

Balcony
16'7" x 4'11" (5063 x 1500mm)

Rokeby Apartments 2 bedroom apartment



Level 1

Level 2

PLOT 106 (1), 114 (2)	
Living/Kitchen/Dining	23'4" x 12'10" (7100 x 3911mm)
Bedroom 1	13'11" x 9'4" (4241 x 2841mm)
En suite	6'7" x 5'1" (2000 x 1550mm)
Bedroom 2	12'4" x 9'4" (3770 x 2851mm)
Bathroom	7'3" x 6'7" (2200 x 2000mm)
TOTAL AREA	781.9 sq ft (72.6 sq m)
Balcony	16'8" x 4'11" (5073 x 1500mm)



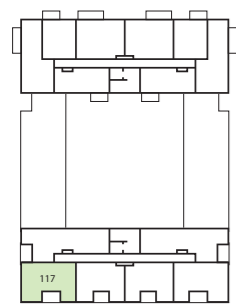
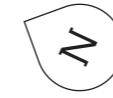
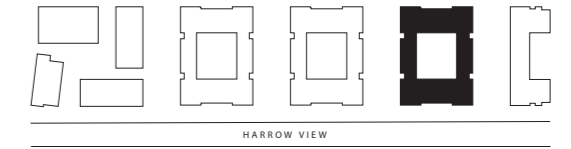
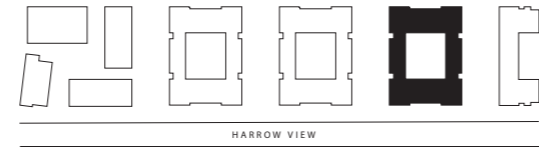
Level 1

Level 2

PLOT 107 (1), 115 (2)	
Living/Kitchen/Dining	21'5" x 12'0" (6524 x 3667mm)
Bedroom 1	11'0" x 10'1" (3350 x 3080mm)
En suite	6'7" x 5'1" (2000 x 1550mm)
Bedroom 2	13'4" x 9'5" (4062 x 2861mm)
Bathroom	7'3" x 6'7" (2200 x 2000mm)
TOTAL AREA	803.7 sq ft (74.7 sq m)
Terrace	11'6" x 6'10" (3498 x 2079mm)

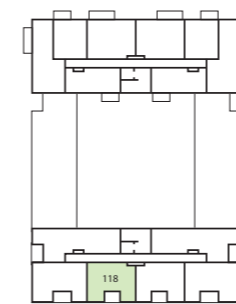
Rokeby Apartments

2 bedroom apartment



Level 3

PLOT 117 (3)
Living/Dining 17'6" x 12'7" (5334 x 3824mm)
Kitchen 12'7" x 7'7" (3824 x 2315mm)
Bedroom 1 12'2" x 9'2" (3710 x 2803mm)
En suite 6'7" x 5'1" (2000 x 1550mm)
Bedroom 2 11'7" x 11'4" (3523 x 3447mm)
Bathroom 7'3" x 6'7" (2200 x 2000mm)
TOTAL AREA 793.5 sq ft (73.7 sq m)
Terrace 11'1" x 7'2" (3385 x 2178mm)

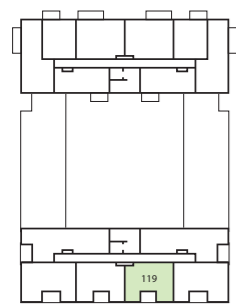
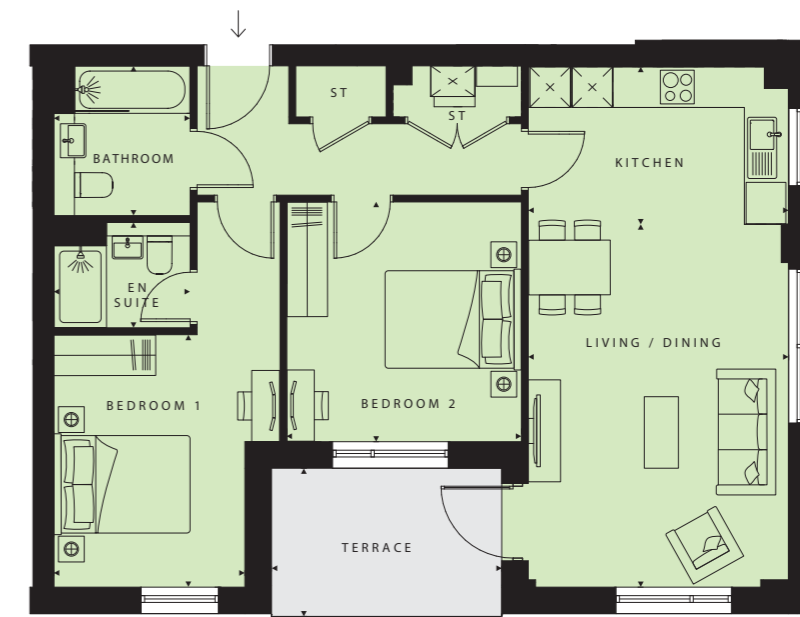
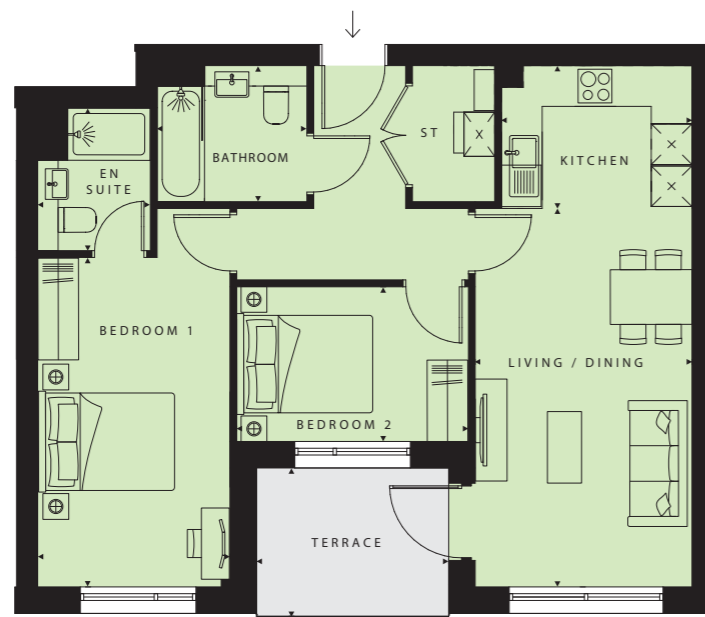
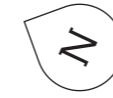
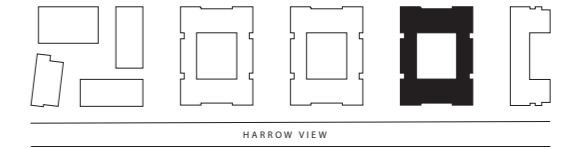
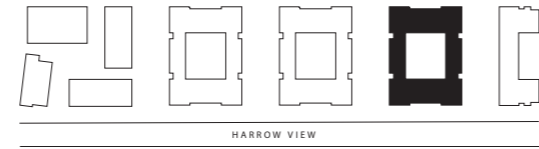


Level 3

PLOT 118 (3)
Living/Dining 18'3" x 10'5" (5561 x 3186mm)
Kitchen 9'2" x 6'11" (2800 x 2100mm)
Bedroom 1 15'11" x 9'3" (4841 x 2825mm)
En suite 6'11" x 5'5" (2100 x 1655mm)
Bedroom 2 11'2" x 7'6" (3401 x 2275mm)
Bathroom 7'3" x 6'7" (2200 x 2000mm)
TOTAL AREA 698.0 sq ft (64.9 sq m)
Terrace 9'3" x 7'2" (2823 x 2175mm)

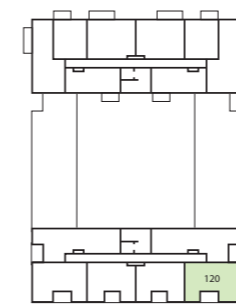
Rokeby Apartments

2 bedroom apartment



Level 3

PLOT 119 (3)
Living/Dining 18'3" x 10'5" (5561 x 3186mm)
Kitchen 9'2" x 6'11" (2800 x 2100mm)
Bedroom 1 15'11" x 9'3" (4841 x 2825mm)
En suite 6'11" x 5'5" (2100 x 1655mm)
Bedroom 2 11'2" x 7'6" (3401 x 2275mm)
Bathroom 7'3" x 6'7" (2200 x 2000mm)
TOTAL AREA 698.0 sq ft (64.9 sq m)
Terrace 9'3" x 7'2" (2823 x 2175mm)

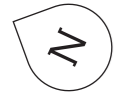
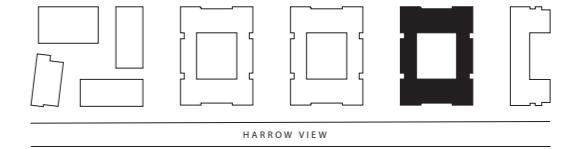
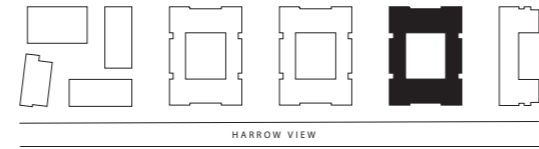


Level 3

PLOT 120 (3)
Living/Dining 17'6" x 12'7" (5334 x 3824mm)
Kitchen 12'7" x 7'7" (3824 x 2315mm)
Bedroom 1 12'2" x 9'2" (3710 x 2803mm)
En suite 6'7" x 5'1" (2000 x 1550mm)
Bedroom 2 11'7" x 11'4" (3523 x 3447mm)
Bathroom 7'3" x 6'7" (2200 x 2000mm)
TOTAL AREA 793.5 sq ft (73.7 sq m)
Terrace 11'1" x 7'2" (3385 x 2178mm)

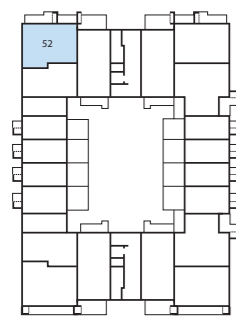
Rokeby Apartments

3 bedroom apartment

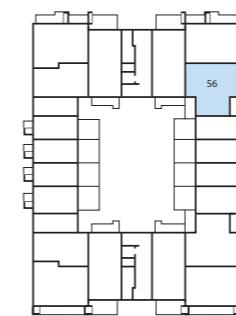


PLOT 52 (0)
Living/Dining 17'3" x 12'5" (5260 x 3780mm)
Kitchen 12'5" x 7'10" (3780 x 2400mm)
Bedroom 1 12'0" x 10'6" (3661 x 3200mm)
En suite 6'7" x 5'1" (2000 x 1550mm)
Bedroom 2 15'9" x 9'0" (4811 x 2750mm)
Bedroom 3 12'1" x 8'2" (3680 x 2490mm)
Bathroom 7'3" x 6'7" (2200 x 2000mm)
TOTAL AREA 940.5 sq ft (87.4 sq m)
Terrace 1 12'8" x 5'3" (3872 x 1600mm)
Terrace 2 12'0" x 5'3" (3653 x 1600mm)

PLOT 56 (0)
Living/Kitchen/Dining 21'5" x 19'0" (6541 x 5791mm)
Bedroom 1 12'11" x 12'0" (3941 x 3670mm)
En suite 8'6" x 8'2" (2600 x 2500mm)
Bedroom 2 12'9" x 11'1" (3877 x 3371mm)
Bedroom 3 12'9" x 10'0" (3877 x 3053mm)
Bathroom 8'2" x 7'3" (2500 x 2200mm)
TOTAL AREA 1038.9 sq ft (96.5 sq m)
Terrace 1 14'7" x 6'7" (4437 x 2000mm)
Terrace 2 7'1" x 7'0" (2157 x 2138mm)



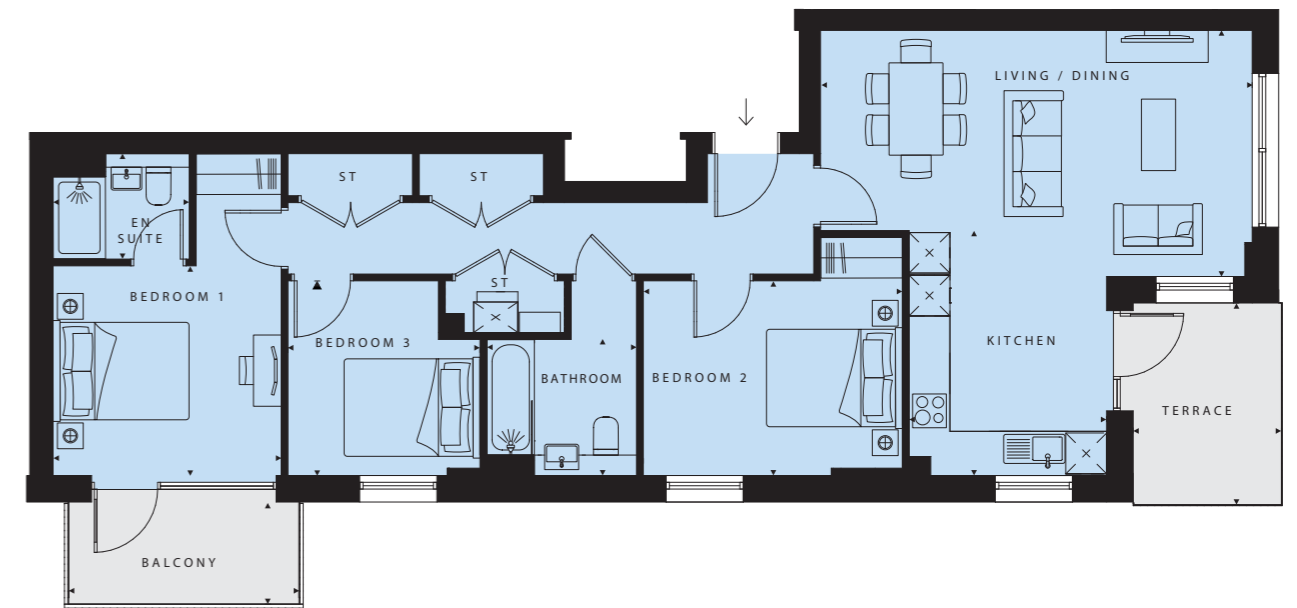
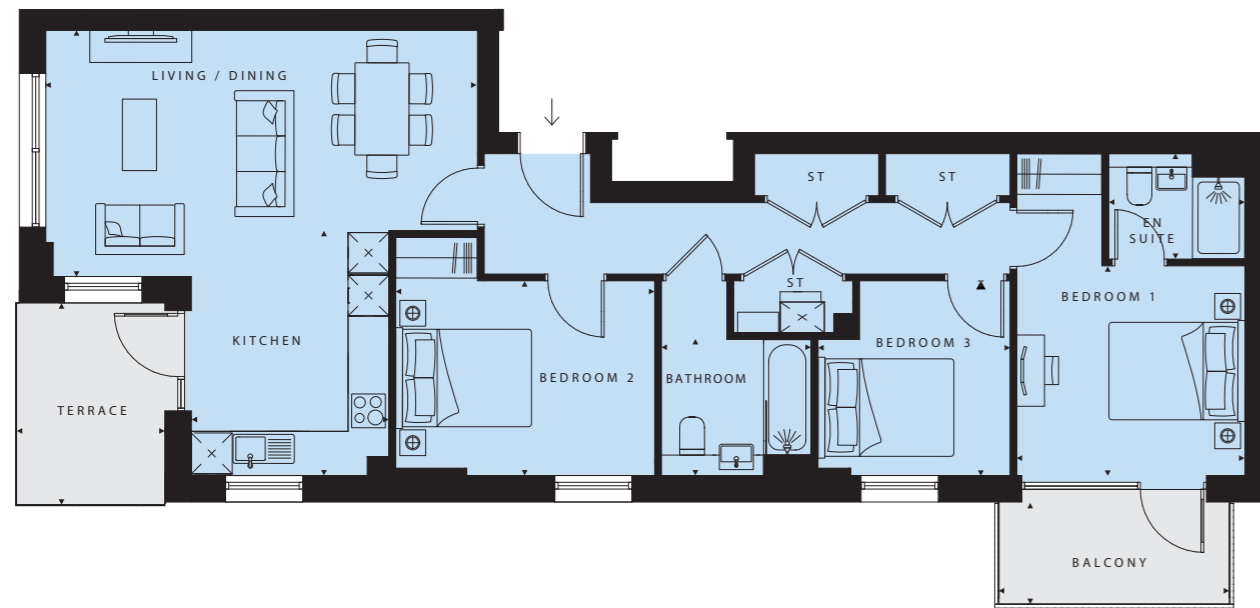
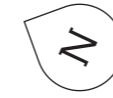
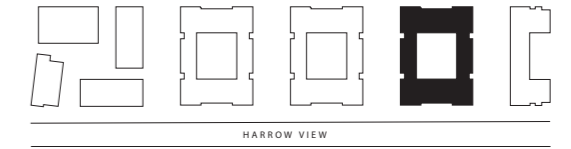
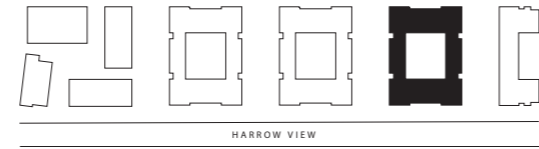
Level 0



Level 0

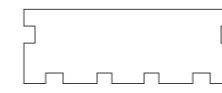
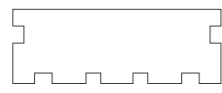
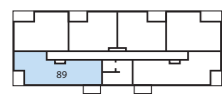
Rokeby Apartments

3 bedroom apartment



PLOT 89 (5)
Living/Dining 20'10" x 11'10" (6341 x 3616mm)
Kitchen 11'10" x 9'6" (3601 x 2904mm)
Bedroom 1 11'0" x 10'1" (3349 x 3080mm)
En suite 6'7" x 5'1" (2000 x 1550mm)
Bedroom 2 12'6" x 9'5" (3803 x 2860mm)
Bedroom 3 9'5" x 9'3" (2860 x 2820mm)
Bathroom 7'3" x 6'7" (2200 x 2001mm)
TOTAL AREA 934.4 sq ft (86.8 sq m)
Terrace 9'9" x 7'2" (2963 x 2178mm)
Balcony 11'0" x 4'11" (3350 x 1500mm)

PLOT 94 (5)
Living/Dining 20'10" x 11'10" (6341 x 3616mm)
Kitchen 11'10" x 9'6" (3601 x 2904mm)
Bedroom 1 11'0" x 10'1" (3349 x 3080mm)
En suite 6'7" x 5'1" (2000 x 1550mm)
Bedroom 2 12'6" x 9'5" (3803 x 2860mm)
Bedroom 3 9'5" x 9'3" (2860 x 2820mm)
Bathroom 7'3" x 6'7" (2200 x 2001mm)
TOTAL AREA 934.4 sq ft (86.8 sq m)
Terrace 9'9" x 7'2" (2963 x 2178mm)
Balcony 11'0" x 4'11" (3350 x 1500mm)

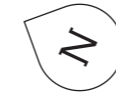
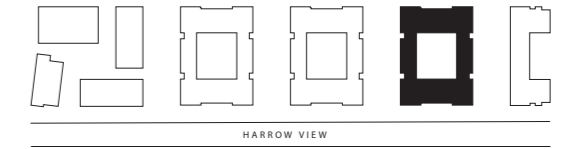
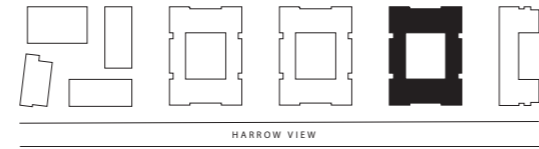


Level 5

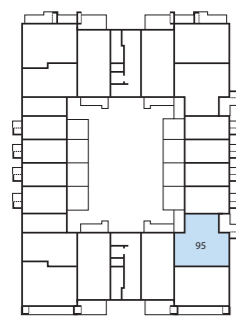
Level 5

Rokeby Apartments

3 bedroom apartment



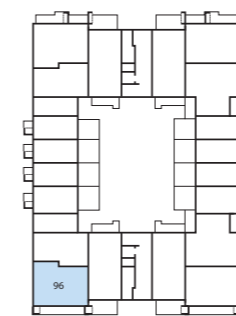
PLOT 95 (0)
Living/Kitchen/Dining 21'5" x 19'0" (6541 x 5791mm)
Bedroom 1 12'11" x 12'0" (3941 x 3670mm)
En suite 8'6" x 8'2" (2600 x 2500mm)
Bedroom 2 12'9" x 11'1" (3877 x 3371mm)
Bedroom 3 12'9" x 10'0" (3877 x 3053mm)
Bathroom 8'2" x 7'3" (2500 x 2200mm)
TOTAL AREA 1038.9 sq ft (96.5 sq m)
Terrace 1 14'7" x 6'7" (4437 x 2000mm)
Terrace 2 7'1" x 7'0" (2157 x 2138mm)



Level 0



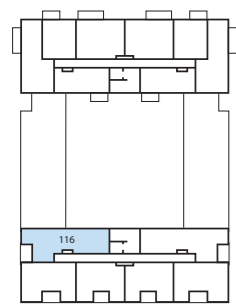
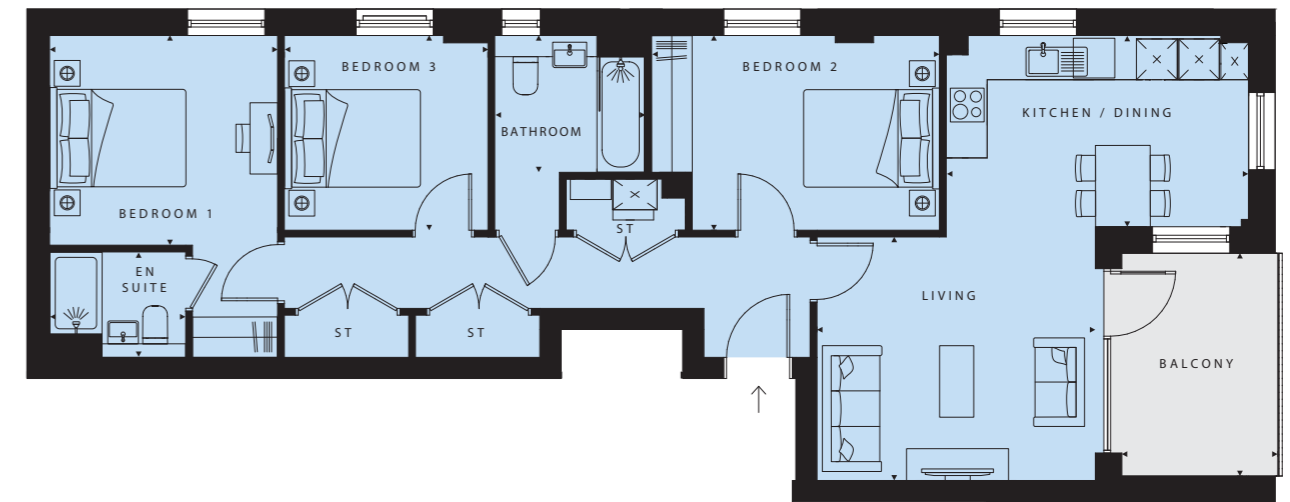
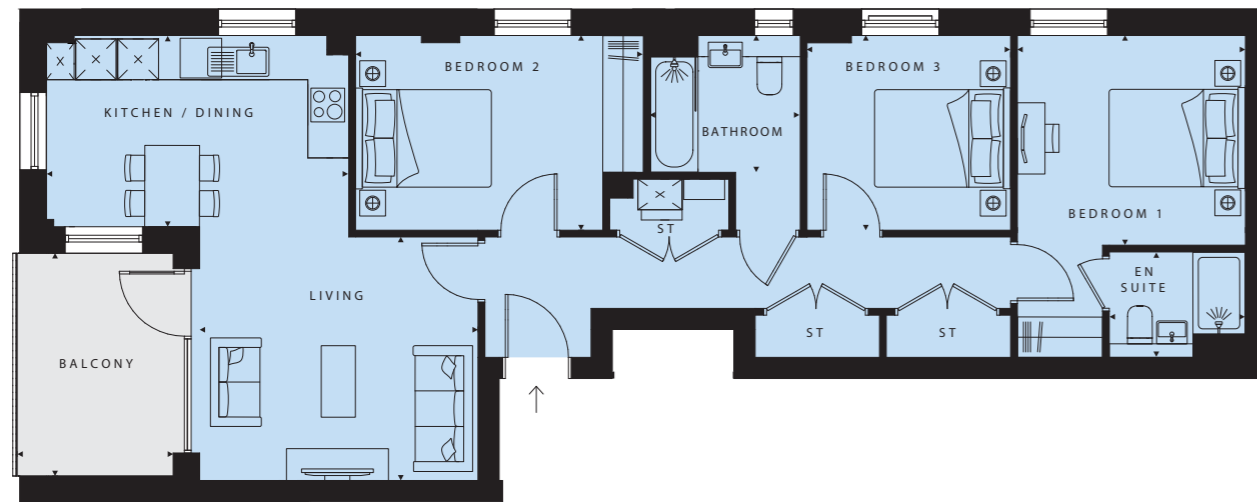
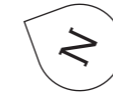
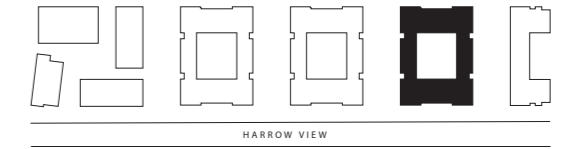
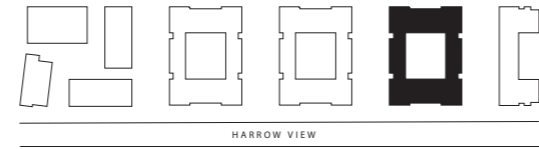
PLOT 96 (0)
Living/Dining 17'3" x 12'5" (5260 x 3780mm)
Kitchen 12'5" x 7'10" (3780 x 2400mm)
Bedroom 1 12'0" x 10'6" (3661 x 3200mm)
En suite 6'7" x 5'1" (2000 x 1550mm)
Bedroom 2 15'9" x 9'0" (4811 x 2750mm)
Bedroom 3 12'1" x 8'2" (3680 x 2490mm)
Bathroom 7'3" x 6'7" (2200 x 2000mm)
TOTAL AREA 940.5 sq ft (87.4 sq m)
Terrace 1 14'5" x 5'3" (4388 x 1600mm)
Terrace 2 10'0" x 5'3" (3037 x 1600mm)



Level 0

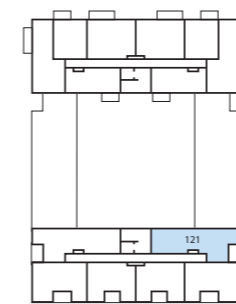
Rokeby Apartments

3 bedroom apartment



Level 3

PLOT 116 (3)
Living 13'5" x 11'9" (4091 x 3580mm)
Kitchen/Dining 14'7" x 9'3" (4441 x 2811mm)
Bedroom 1 11'0" x 10'1" (3350 x 3081mm)
En suite 6'7" x 5'1" (2000 x 1550mm)
Bedroom 2 13'11" x 9'5" (4233 x 2861mm)
Bedroom 3 9'10" x 9'5" (2990 x 2861mm)
Bathroom 7'3" x 6'7" (2200 x 2011mm)
TOTAL AREA 911.4 sq ft (84.7 sq m)
Balcony 10'9" x 7'6" (3273 x 2290mm)

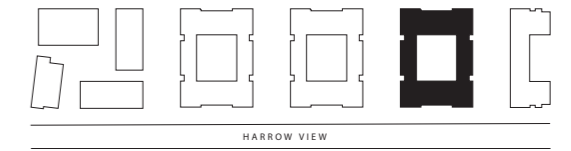
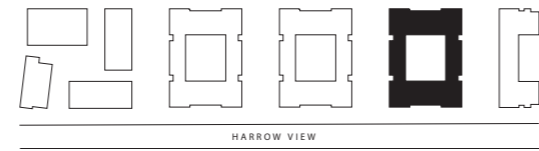


Level 3

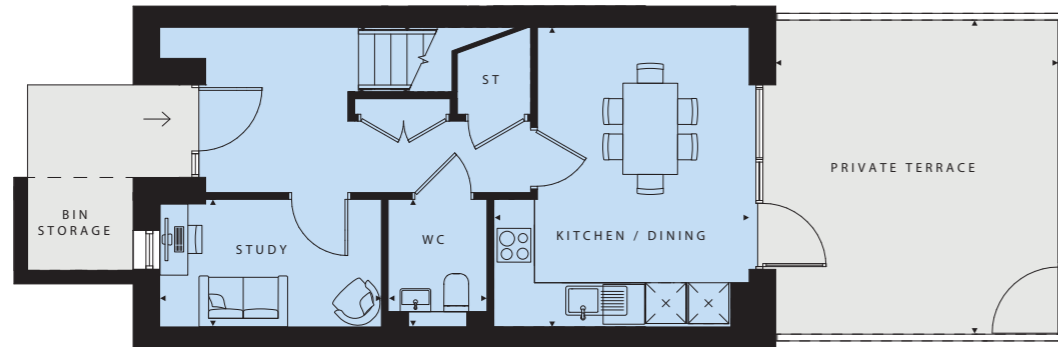
PLOT 121 (3)
Living 13'5" x 11'9" (4091 x 3580mm)
Kitchen/Dining 14'7" x 9'3" (4441 x 2811mm)
Bedroom 1 11'0" x 10'1" (3350 x 3081mm)
En suite 6'7" x 5'1" (2000 x 1550mm)
Bedroom 2 13'11" x 9'5" (4233 x 2861mm)
Bedroom 3 9'10" x 9'5" (2990 x 2861mm)
Bathroom 7'3" x 6'7" (2200 x 2011mm)
TOTAL AREA 911.4 sq ft (84.7 sq m)
Balcony 10'9" x 7'6" (3273 x 2290mm)

Rokeby Houses

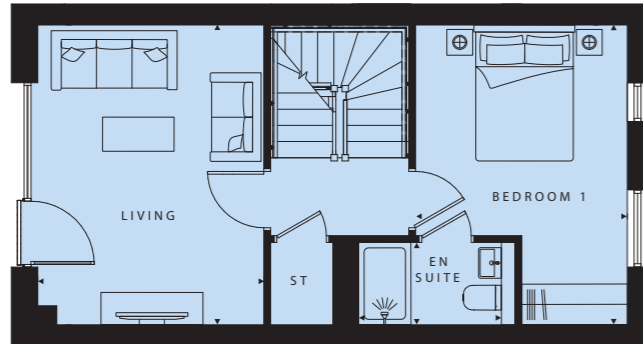
3 bedroom house



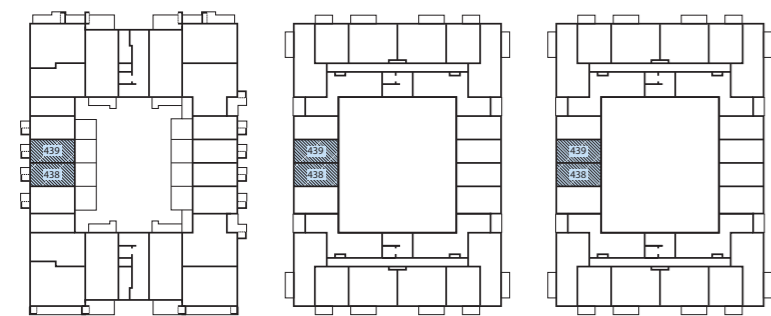
Level 0



Level 1



Level 2



Level 0 Level 1 Level 2

PLOT 438 (0, 1, 2), 439 (0, 1, 2)

Kitchen/Dining
14'5" x 12'4" (4405 x 3753mm)

Living
14'5" x 10'11" (4405 x 3321mm)

Study
10'8" x 6'2" (3258 x 1875mm)

WC
6'2" x 4'9" (1875 x 1450mm)

Bedroom 1
14'5" x 10'2" (4405 x 3110mm)

En suite
7'7" x 4'0" (2300 x 1210 mm)

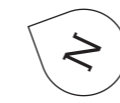
Bedroom 2
14'5" x 10'2" (4405 x 3111mm)

Bedroom 3
10'11" x 7'7" (3320 x 2305mm)

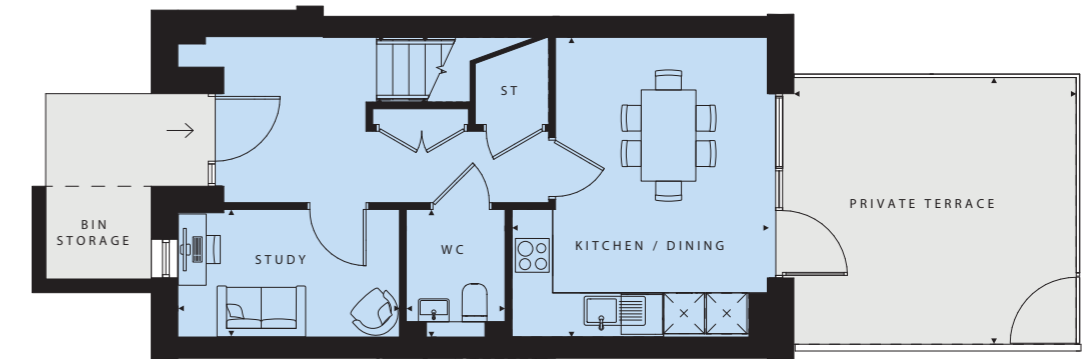
Bathroom
7'3" x 6'7" (2200 x 2000mm)

TOTAL AREA
1216.3 sq ft (113.0 sq m)

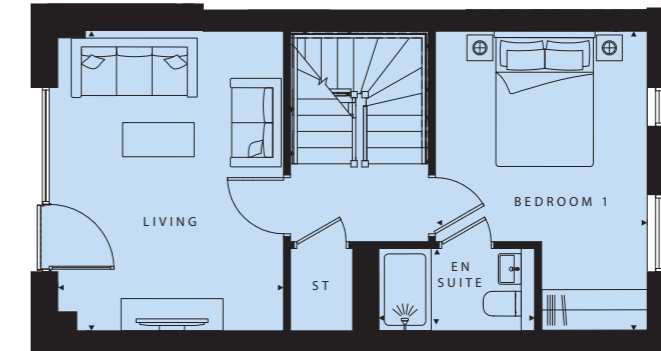
Private Terrace
15'2" x 13'7" (4615 x 4150mm)



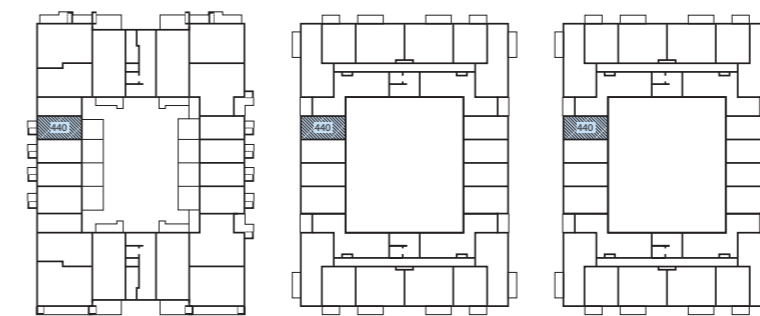
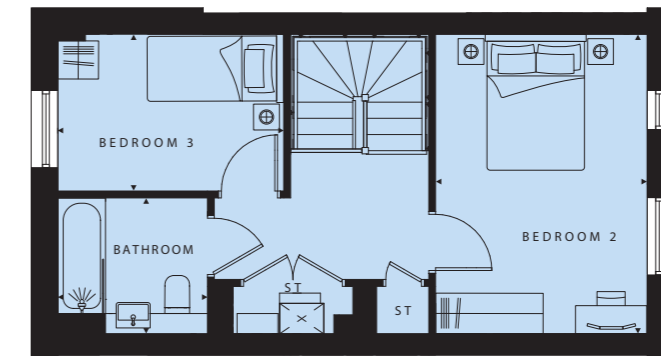
Level 0



Level 1



Level 2



Level 0 Level 1 Level 2

PLOT 440 (0, 1, 2)

Kitchen/Dining
14'5" x 12'4" (4405 x 3753mm)

Living
14'5" x 10'11" (4405 x 3321mm)

Study
10'8" x 6'2" (3258 x 1875mm)

WC
6'2" x 4'9" (1875 x 1450mm)

Bedroom 1
14'5" x 10'2" (4405 x 3110mm)

En suite
7'7" x 4'0" (2300 x 1210 mm)

Bedroom 2
14'5" x 10'2" (4405 x 3111mm)

Bedroom 3
10'11" x 7'7" (3320 x 2305mm)

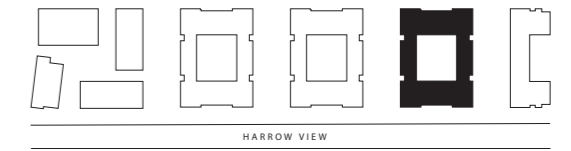
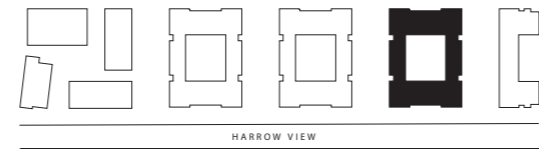
Bathroom
7'3" x 6'7" (2200 x 2000mm)

TOTAL AREA
1216.3 sq ft (113.0 sq m)

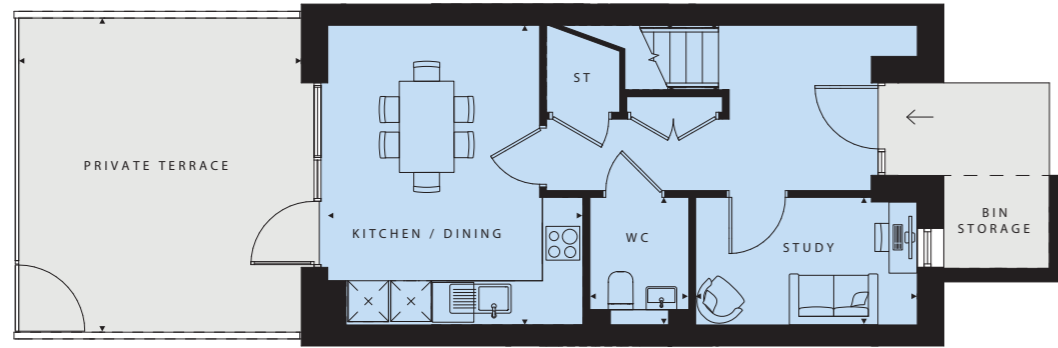
Private Terrace
13'7" x 12'10" (4150 x 3920mm)

Rokeby Houses

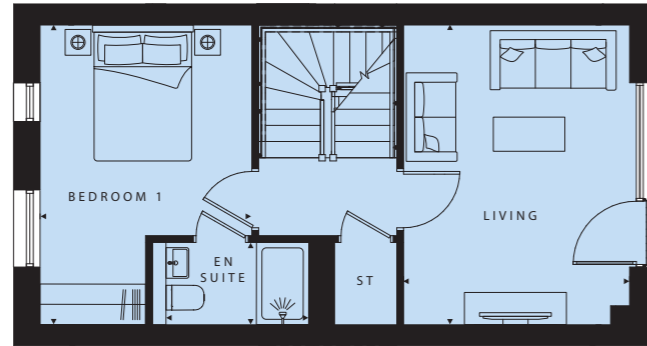
3 bedroom house



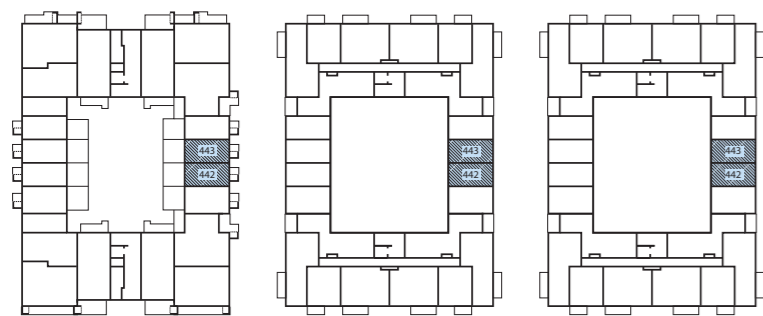
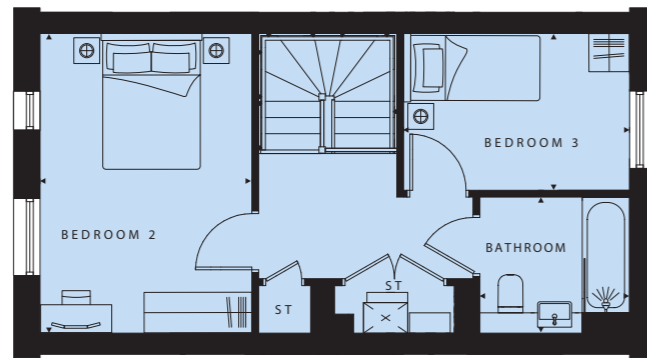
Level 0



Level 1



Level 2



Level 0 Level 1 Level 2

PLOT 442 (0, 1, 2), 443 (0, 1, 2)

Kitchen/Dining
14'5" x 12'4" (4405 x 3753mm)

Living
14'5" x 10'11" (4405 x 3321mm)

Study
10'8" x 6'2" (3258 x 1875mm)

WC
6'2" x 4'9" (1875 x 1450mm)

Bedroom 1
14'5" x 10'2" (4405 x 3110mm)

En suite
7'7" x 4'0" (2300 x 1210 mm)

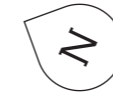
Bedroom 2
14'5" x 10'2" (4405 x 3111mm)

Bedroom 3
10'11" x 7'7" (3320 x 2305mm)

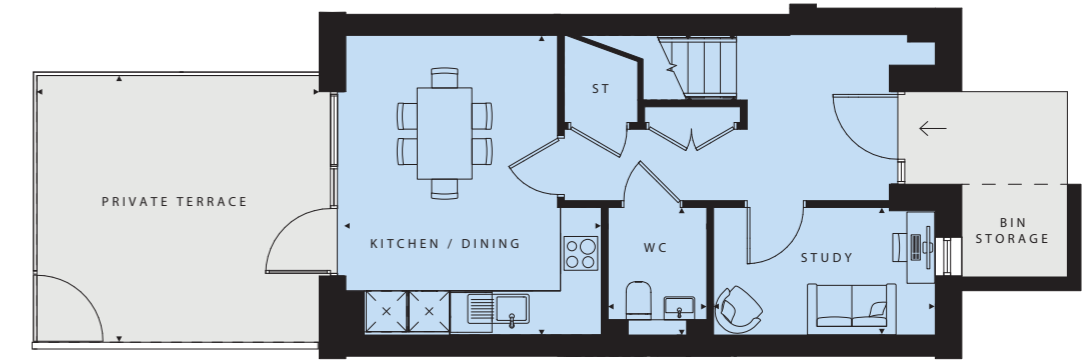
Bathroom
7'3" x 6'7" (2200 x 2000mm)

TOTAL AREA
1216.3 sq ft (113.0 sq m)

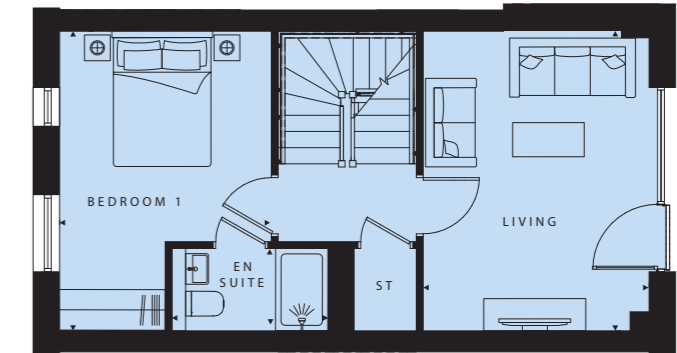
Private Terrace
15'2" x 13'7" (4615 x 4150mm)



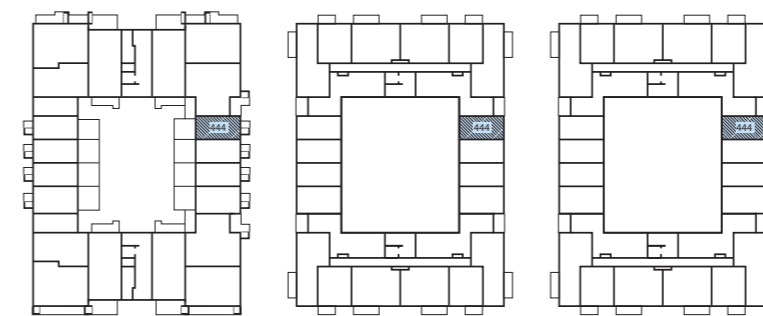
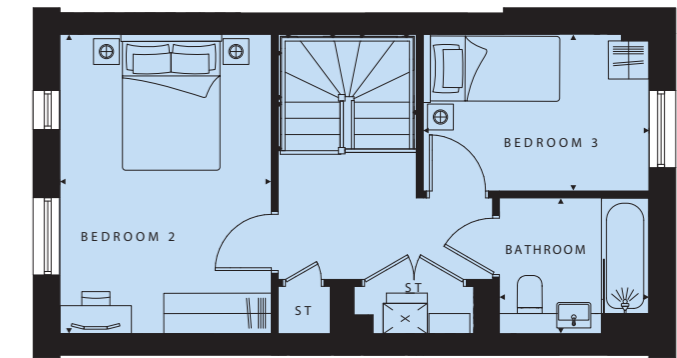
Level 0



Level 1



Level 2



Level 0 Level 1 Level 2

PLOT 444 (0, 1, 2)

Kitchen/Dining
14'5" x 12'4" (4405 x 3753mm)

Living
14'5" x 10'11" (4405 x 3321mm)

Study
10'8" x 6'2" (3258 x 1875mm)

WC
6'2" x 4'9" (1875 x 1450mm)

Bedroom 1
14'5" x 10'2" (4405 x 3110mm)

En suite
7'7" x 4'0" (2300 x 1210 mm)

Bedroom 2
14'5" x 10'2" (4405 x 3111mm)

Bedroom 3
10'11" x 7'7" (3320 x 2305mm)

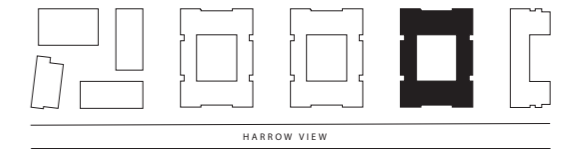
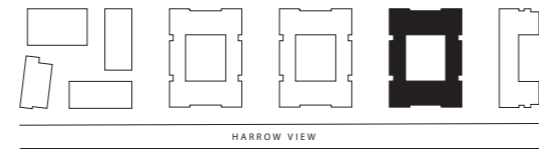
Bathroom
7'3" x 6'7" (2200 x 2000mm)

TOTAL AREA
1216.3 sq ft (113.0 sq m)

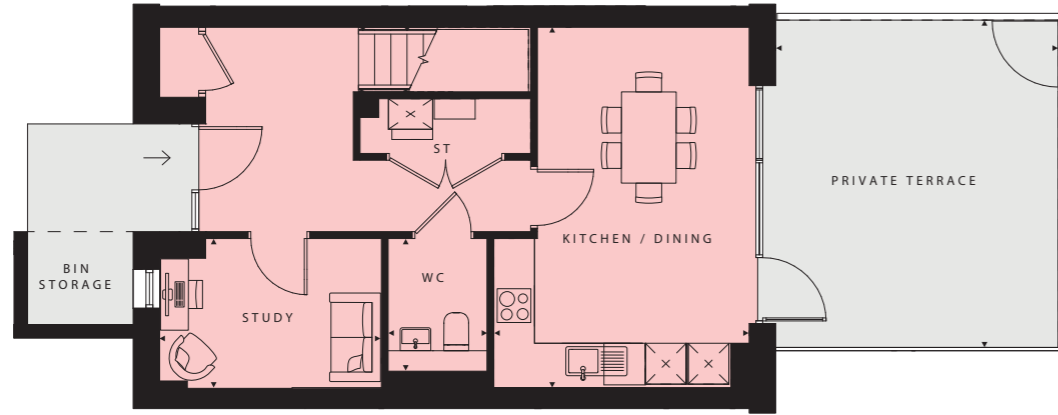
Private Terrace
13'7" x 12'10" (4150 x 3920mm)

Rokeby Houses

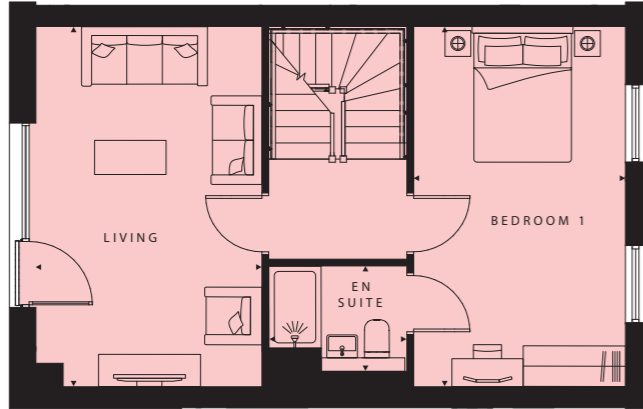
4 bedroom house



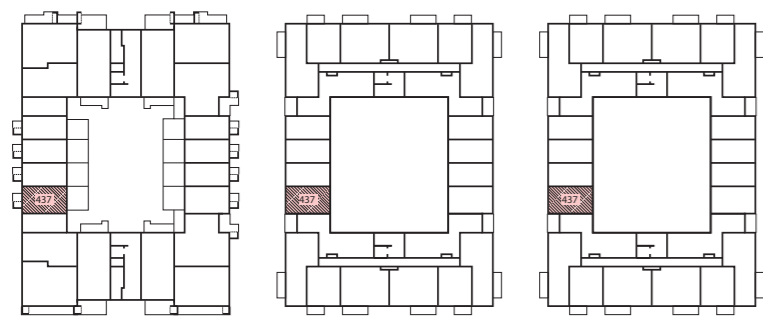
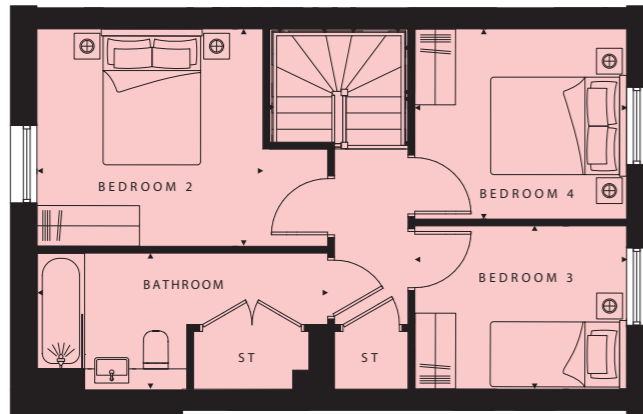
Level 0



Level 1



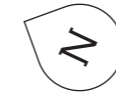
Level 2



Level 0 Level 1 Level 2

PLOT 437 (0, 1, 2)

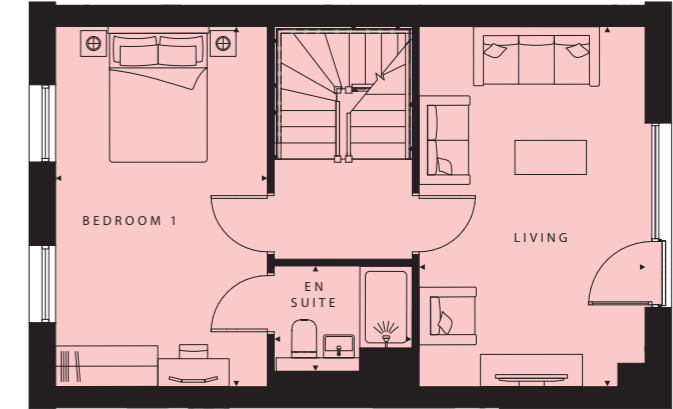
Kitchen/Dining 17'4" x 12'4" (5295 x 3753mm)	Bedroom 2 10'11" x 10'6" (3321 x 3195mm)
Living 17'4" x 10'11" (5295 x 3321mm)	Bedroom 3 10'2" x 7'10" (3111 x 2400mm)
Study 10'8" x 7'2" (3261 x 2190mm)	Bedroom 4 10'2" x 9'2" (3111 x 2795mm)
WC 6'5" x 4'9" (1950 x 1450mm)	Bathroom 7'3" x 6'7" (2200 x 2000mm)
Bedroom 1 17'4" x 10'2" (5295 x 3110mm)	TOTAL AREA 1463.7 sq ft (136.0 sq m)
En suite 6'8" x 5'1" (2030 x 1550mm)	Private Terrace 15'9" x 13'7" (4810 x 4150mm)



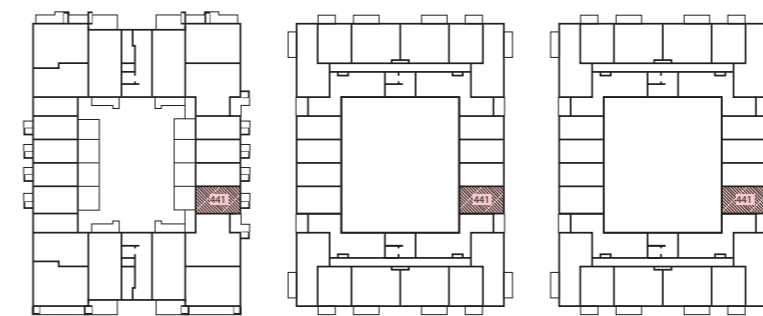
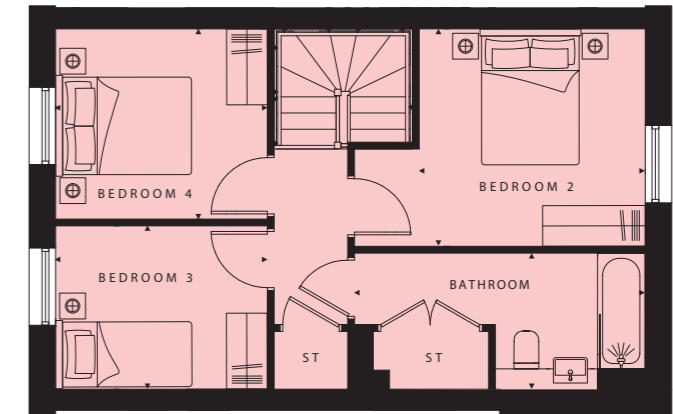
Level 0



Level 1



Level 2



Level 0 Level 1 Level 2

PLOT 441 (0, 1, 2)

Kitchen/Dining 17'4" x 12'4" (5295 x 3753mm)	Bedroom 2 10'11" x 10'6" (3321 x 3195mm)
Living 17'4" x 10'11" (5295 x 3321mm)	Bedroom 3 10'2" x 7'10" (3111 x 2400mm)
Study 10'8" x 7'2" (3261 x 2190mm)	Bedroom 4 10'2" x 9'2" (3111 x 2795mm)
WC 6'5" x 4'9" (1950 x 1450mm)	Bathroom 7'3" x 6'7" (2200 x 2000mm)
Bedroom 1 17'4" x 10'2" (5295 x 3110mm)	TOTAL AREA 1463.7 sq ft (136.0 sq m)
En suite 6'8" x 5'1" (2030 x 1550mm)	Private Terrace 15'9" x 13'7" (4810 x 4150mm)

Specification

Kitchen

Individually designed handleless German kitchens with soft-close doors and drawers

Matching worktops and full-height upstands

Stainless steel bowl sink and chrome tap

Fully integrated appliances including combi oven, hood, ceramic hob, dishwasher and fridge/freezer

Spotlight lighting

General

Underfloor heating throughout

Video door entry

BT TV/Sky+/FM connectivity in living area

Fibre broadband connectivity

Pendant lighting in hallway, living area and bedrooms

Flooring finishes available at an additional cost – please speak to a Sales Adviser for more information

Bathroom

White hand wash basin

Toilet with soft-close pan

White bath with bath screen

White freestanding shower tray (where applicable)

White heated towel rail

Ceramic wall tiles

Ceramic floor tiles

Shaver socket

Spotlight lighting

Communal areas and facilities

Lifts to all floors

Entrance foyer within each block

Car parking *

En suite

White hand wash basin

Toilet with soft-close pan

White bath with bath screen (where applicable)

White freestanding shower tray (where applicable)

White heated towel rail

Ceramic wall tiles

Ceramic floor tiles

Shaver socket

Spotlight lighting



* Car parking will be available for selected two, three and four-bedroom homes at an additional cost

Images may contain upgrades available at an additional cost